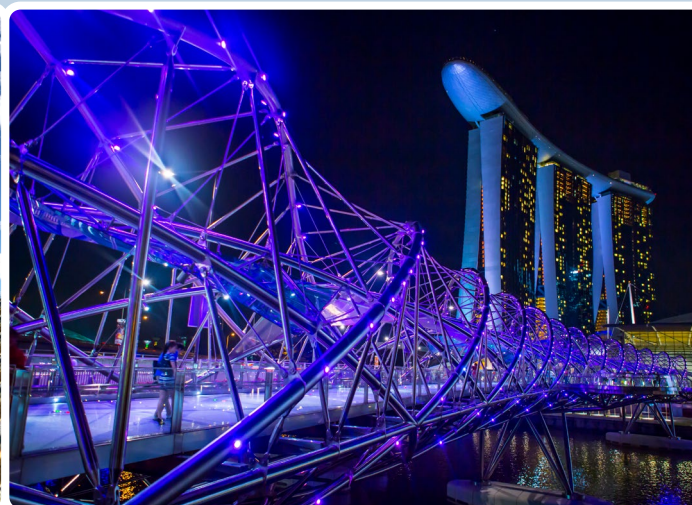


## Stainless Steel in Infrastructure: Bridges



**Bridges on the cover page:**

Golden bridge. Picture courtesy of TA Corporation.	Helix bridge. Picture courtesy of Outokumpu and photographer Andrea Goh.	Giboshi-bashi bridge. Picture courtesy of Tottori-city.
Pedestrian bridge in Ortisei. Picture courtesy of Centro Inox.	Hong Kong - Zhuhai - Macau bridge. Picture courtesy of Shutterstock.	Sölvesborg bridge. Picture courtesy of Outokumpu.



## Introduction

There are hundreds of thousands of bridges in the world, over 600,000 in the USA alone. More and more are being built. They provide essential links between regions and countries. The costs of maintenance or/and replacement amount to huge figures over time.

- Many Bridges are in a poor condition
- A lot of them were built after World War II for a projected life of 60 years plus
- Traffic has been heavier than planned
- Cutting maintenance costs has been a frequent practice

Life Cycle Cost (LCC) evaluations consistently show the benefits of providing operation with as little maintenance as possible over a lifetime exceeding a

century. Stainless steels, especially Duplex stainless steels, offer an extremely attractive way of providing structural integrity over unlimited time, thanks to their high strength and their corrosion resistance that meets all climates and weather conditions. The extra cost over a cheap short-term solution is less than 10% when used in the critical areas.

The cases in this brochure illustrate the use of stainless steel for road, pedestrian, rail, mixed rail/road/cycles traffic. They are located in hot and cold climates, inland and on the seaside.

Various product forms, tubes, tie rods, rebar, plates, fasteners, etc.. have been used, demonstrating the wide range of options available to the architects/civil engineers.

# Contents

## Roadway bridges

Moreland Millennium Bridge in Kwa-Zulu Natal  
Samuel De Champlain Bridge  
Hastings Bridge  
Cameron Heights Overpass  
St. Croix Crossing Bridge  
Athabasca River Bridge  
Stonecutters Bridge  
Hong Kong – Zhuhai – Macau Bridge (HZMB)  
Nou Road Bridge  
Bridge Cover  
Sheikh Jaber Al-Ahmad Al-Sabah causeway  
Queensferry Crossing  
Cala Galdana Bridge  
New Malizia Bridge  
New bridge on the river Brenta  
Nynäshamn Road Bridge  
Allt Chonoglais Bridge  
Junction Värtan  
Slussen Bridge  
Flottsund Bridge  
Second Gateway Bridge  
Story Bridge

[Go-Between Bridge](#)

## Railway bridges

[Söderström Bridge](#)  
[Añorga Railway Bridge](#)

## Pedestrian bridges

[Pedestrian Bridge at Kwa-Zulu Natal](#)  
[Garrison Crossing \(Fort York Pedestrian and Cycle Bridge\)](#)  
[Harbor Drive Pedestrian Bridge](#)  
[New Farm Riverwalk](#)  
[Christina and John Markey Memorial Pedestrian Bridge](#)  
[Helix Bridge](#)  
[Golden Bridge](#)  
[Sasashima Komeno Bridge](#)  
[Terrace Bridge](#)  
[Giboshi-bashi Bridge](#)  
[Padre Arrupe Footbridge](#)  
[Celtic Gateway Bridge](#)  
[TRUMPF Bridge](#)

[Bascule Pedestrian Bridge](#)  
[Footbridge for skiers](#)  
[Pedestrian Bridge in Ortisei](#)  
[Pedestrian Bridge in Scheggino](#)  
[Bridge across the E4 in Södertälje](#)  
[Sölvesborg Footbridge](#)  
[The bridge at the Vasa Museum](#)  
[Likholefossen Bridge](#)  
[Siena Footbridge](#)  
[Zumaia Footbridge](#)  
[Sant Fruitos Pedestrian Bridge](#)  
[Pùnt da Suransuns](#)  
[3D printed steel bridge](#)  
[Vilafant Pedestrian Bridges](#)  
[Folke Bernadotte Bridge](#)  
[Newcastle Memorial Walk](#)  
[Elizabeth Quay Pedestrian Bridge](#)

## Other types of bridges

[Tokyo Haneda International Airport](#)  
[Takayo water pipe bridge](#)  
[University of Birmingham Steam Bridge](#)



## Roadway bridges



## Moreland Millennium Bridge in Kwa-Zulu Natal



Moreland Millennium at Kwa-Zulu Natal. Picture courtesy of Columbus Stainless.

Location:	Durban, South Africa
Crosses:	M41 highway in Umhlanga Rocks
Type:	arch bridge for roadway
Opened in:	2001
Materials:	3CR12 (45 tons) and 304 tubes (240 meters), Columbus Stainless
Stainless steel products:	masts (3CR12) and railing (304)
Architects:	GAPP Architects
Photographs:	Courtesy of Columbus
More information:	<a href="http://columbus.co.za">columbus.co.za</a>



## History

The Moreland Millennium Bridge is an iconic bridge which was commissioned in 1999 by the Durban Roads Department to be built over the M41 highway in Umhlanga Rocks. It is located in Durban, South Africa, approximately 1 km from the coastline. The bridge is aptly named to celebrate the 21st Century and the new Millennium.

### Why stainless steel?

This iconic application is designed to use the combination of concrete and the dynamic use of stainless steel to capture its asymmetric setting. To ensure its longevity, the architects decided to build the structural components in stainless steel. Grade 304 was specified for the structural tubing and 3CR12 for the vertical masts. All the stainless steel supplied in this application was manufactured at Columbus Stainless. Due to budgetary constraints at the time of construction; the hand rails at street level were specified in galvanized steel. All the metal work

was painted white, not only to enhance the desired aesthetics but also for corrosion considerations due to the applications proximity to the shoreline. Over the years, regular flaking of the paint on the galvanized railings, due to paint damage and under-film creep, has resulted in significant corrosion, necessitating repainting on numerous occasions. The painted stainless steel, including 3CR12 structures, have shown no evidence of corrosion, even where damage to the paint has occurred. This application has highlighted the superior paint adhesion of stainless steel compared to galvanized steel in coastal applications.



Moreland Millennium at Kwa-Zulu Natal. Picture courtesy of Columbus Stainless.

## Samuel De Champlain Bridge



Samuel De Champlain Bridge. Picture courtesy of North American Stainless

Location: Montreal, Canada  
Crosses: St. Lawrence River  
Type: Cable-stayed bridge for roadway  
Opened in: 2019 (replacement)  
Materials: Duplex 2304,  
North American Stainless  
Stainless steel products: rebar  
Structural designer: Poul Ove Jensen of the Firm  
Dissing & Weitling and Claude  
Provencher from the Firm  
Provencher & Roy  
Photographs: Courtesy of North American  
Stainless  
More information: [northamericanstainless.com](http://northamericanstainless.com)





## History

The old Champlain bridge over the St Lawrence River, commissioned in 1962, conveyed some 57 million vehicles per year, the highest traffic for a bridge in Canada. At peak hours, up to 6200 vehicles crossed the bridge in a single direction. The bridge was not only remarkable by its length, 3.4 km, but also because it features a sufficient clearance

over the seaway to allow the passage of sea-going vessels to and from the Great Lakes. The new bridge design is that of a cable-stayed bridge with a main span of 240 m. The bridge carries three separate transportation corridors; each of these supported by its own steel superstructure. Both North and South corridors have three lane highways with inner and outer shoulders. The North corridor also includes a 3.5 m lane for pedestrians and cyclists.

## Why stainless steel?

The deck and the concrete of the old bridge were badly damaged by corrosion mainly caused by deicing salts over the years, while the traffic was much higher than what the bridge was designed for. Maintenance was more and more expensive just to keep it in service. The new bridge is built of reinforced concrete. New features include higher traffic capacity, lanes for public transportation vehicles (such as a light rail service), larger clearances for ships above the seaway and an elegant design. 2304 duplex stainless steel rebar was used to resist corrosion by de-icing salts in the critical areas.



Samuel De Champlain Bridge.  
Picture courtesy of North American Stainless



Samuel De Champlain Bridge.  
Picture courtesy of North American Stainless



## Hastings Bridge



Hastings Bridge. Picture courtesy of Corrosion Resistance Reinforcing, LCC

Location: Hastings, Minnesota, USA  
Crosses: Mississippi River  
Type: Tied arch bridge for roadway  
Opened in: 2013 (Replacement)  
Materials: Duplex 2304 (289 tons),  
North American Stainless

Stainless Steel products: Rebar

Structural designer: Parsons

Photographs: Courtesy of Corrosion  
Resistance Reinforcing, LCC

More information: [northamericanstainless.com](http://northamericanstainless.com)



## History

The original Hastings bridge was the busiest 2-lane bridge in Minnesota with some 34,000 vehicles crossing daily. The new bridge, which has a tied arch as its main span, started construction in 2010 and the four-lane bridge opened to traffic in 2013.

### Why stainless steel?

Due to the harsh winter conditions in Minnesota, with long winters and extensive use of road salt, the Minnesota Transport Department chose stainless steel rebar as the best alternative for rebar for this bridge. Even though the initial cost was higher than other alternatives, it was estimated that the use of stainless would translate over the long term into savings due to less maintenance needed.



Hastings Bridge. Picture courtesy of Corrosion Resistance Reinforcing, LLC





## Cameron Heights Overpass



Cameron Heights Overpass. Picture courtesy of Terry Bourque.

Location:	Edmonton, Canada
Crosses:	roadway (Anthony Henday Drive)
Type:	bridge for roadway
Opened in :	2011
Materials:	Forta DX 2304, Outokumpu
Stainless steel products:	rebar
Photographs:	courtesy of Outokumpu
More information:	<a href="http://outokumpu.com">outokumpu.com</a>



## Why stainless steel?

Winters are very cold in Edmonton and the government demands a 100-year lifespan for its new roads. Therefore, the materials used for the bridge needed to resist the corrosive de-icing salts that are used often in winter. Most reinforced concrete structures are strengthened with rebar made from carbon steel. However, this is vulnerable to corrosion when installed in environments where they may be exposed to salts, such as marine environments or road projects in cold climates with de-icing salts frequently used. This corrosion leads to swelling of the rebar, which causes the concrete to crumble – leading to the need to repair or replace the structure prematurely.

To avoid this effect for the Cameron Heights overpass, 356 tons of Forta DX 2304 stainless steel rebar were used. Forta DX 2304 has superior corrosion-resistance that lends the bridge deck a 100 year lifespan, making it virtually maintenancefree.



Cameron Heights Overpass. Picture courtesy of Terry Bourque

## History

Due to increasing congestion on the roads (and a prediction that traffic would double over the next 20 years) the Alberta Department of Transportation decided to add overpass bridges and flyovers to

Edmonton's ring road, known as Anthony Henday Drive. The bridges and flyovers meant that the traffic lights could be removed to speed up traffic flows without putting drivers' safety at risk. The bridge was opened to traffic in time for the

winter of 2011 and is easing traffic flow. It has also required very little maintenance and is withstanding the harsh winters.





## St. Croix Crossing Bridge



St. Croix Crossing Bridge. Picture courtesy of North American Stainless.

Location:	Stillwater, Minnesota, USA
Crosses:	St. Croix River
Type:	cable-stayed with box-girder bridge for roadway
Opened in:	2017 (replacement)
Materials:	Duplex 2304 (about 6,000 tons), North American Stainless
Stainless steel products:	rebar
Photographs:	courtesy of North American Stainless (overall view) courtesy of Corrosion Resistance Reinforcing, LCC (others)
More information:	<a href="http://northamericanstainless.com">northamericanstainless.com</a>



St. Croix Crossing Bridge. Picture courtesy of Corrosion Resistance Reinforcing LLC

## History

The original Stillwater lift bridge was built in 1931. The lift bridge has become a much-loved symbol of the city of Stillwater, nestled on the west bank of the St. Croix River. The St. Croix River Crossing Project called for the construction of a new four-lane bridge. Construction began in 2014 and the bridge was opened to vehicle traffic on August 2, 2017.



St. Croix Crossing Bridge. Picture courtesy of Corrosion Resistance Reinforcing LLC

## Why stainless steel?

The new St. Croix Crossing Bridge is extradosed design, combining cable-stay engineering with box-girder construction (650 precast box girders). Only the second of its type in the U.S. Amount of concrete used: 139,219 cubic yards. Area of bridge where stainless reinforcement bar was used: Deck (approx. 6,000 Tons of Duplex 2304).

## Athabasca River Bridge



Athabasca River Bridge. Picture courtesy of HOF - Greg Halinda

Location:	Alberta, Canada
Crosses:	Athabasca River
Type:	girder bridge for roadway
Opened in:	2011
Materials:	Forta LDX 2101, Outokumpu
Stainless steel products:	rebar
Structural Design:	Flatiron
Photographs:	courtesy of Outokumpu and
Photographer:	HOF / Greg Halinda
More information:	<a href="http://outokumpu.com">outokumpu.com</a>





Athabasca River Bridge. Picture courtesy of Outokumpu.

## History

Canada's Highway 63 is an important route for the country's oil and gas and mining industries, much of which are based around the center of Fort McMurray. With the industry growing rapidly, the Alberta government wanted to meet demand from growing levels of traffic and improve driver safety. The Athabasca River Bridge was designed to meet this need – but the project would be far from simple to execute. The Alberta Ministry of Transportation required a long-lasting, weather-resistant bridge that could handle heavy traffic loads, winter snow and ice, and the chloride salt that is used to clear snow and ice.

Completed in 2011, the bridge is making it simple and convenient for Alberta's residential and commercial drivers to cross the Athabasca. In 2012 – the first full year of operation – 503 supersized loads travelled over the bridge.

## Why stainless steel?

The department commissioned construction and infrastructure firm Flatiron for the structural design and Outokumpu was enlisted to provide the stainless steel rebar. Outokumpu provided stainless steel rebar for every part of the bridge that could conceivably be exposed to deicing salts.

At 15,500 square meters, Athabasca River Bridge is the largest bridge in Alberta and needs to carry super-sized loads of up to 1,100 tons to support local industry. Getting the economics right was as important as getting the material right, so 340 tons of Forta LDX 2101 rebar was chosen as a cost-effective option. With C4-class corrosion resistance, it's also a highly durable one – designed for a long lifespan and adverse weather conditions.





## Stonecutters Bridge



Stonecutters Bridge. Picture courtesy of iStock.

Location:	Hong Kong
Crosses:	Rambler Channel
Type:	Cable stayed Bridge for roadway
Opened in:	2009
Materials:	Forta DX 2205 plate and pipe, Outokumpu
Stainless steel products: Top of the pylons and back span anchor pipes	
Architects:	Ove Arup and partners
Photographs:	Courtesy of iStock
More information:	<a href="http://outokumpu.com">outokumpu.com</a>

## History

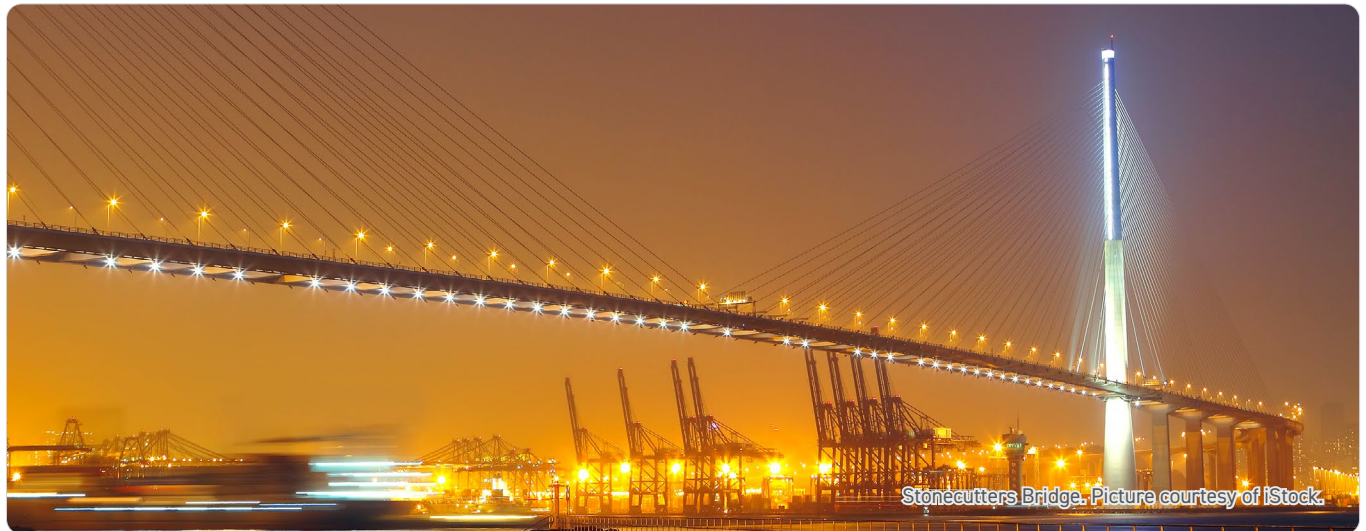
Stonecutters Bridge, Hong Kong, is a cable stayed structure with a total length of 1596 m and a main span of 1018 m. Opened at the end of 2009, the bridge crosses the Rambler Channel and is the main entrance to the busy Kwai Chung Container Port. It is visible from many parts of Hong Kong Island and Kowloon. The most striking features of the bridge are the twin tapered mono towers at each end supporting the 50 m wide deck.

### Why stainless steel?

These tapered towers rise to 295 m above sea level; the lower sections are reinforced concrete while the upper 115 m are composite sections with an outer stainless steel skin and a reinforced concrete core.



Stonecutters Bridge. Picture courtesy of iStock.



Stonecutters Bridge. Picture courtesy of iStock.





## Hong Kong - Zhuhai - Macau Bridge (HZMB)



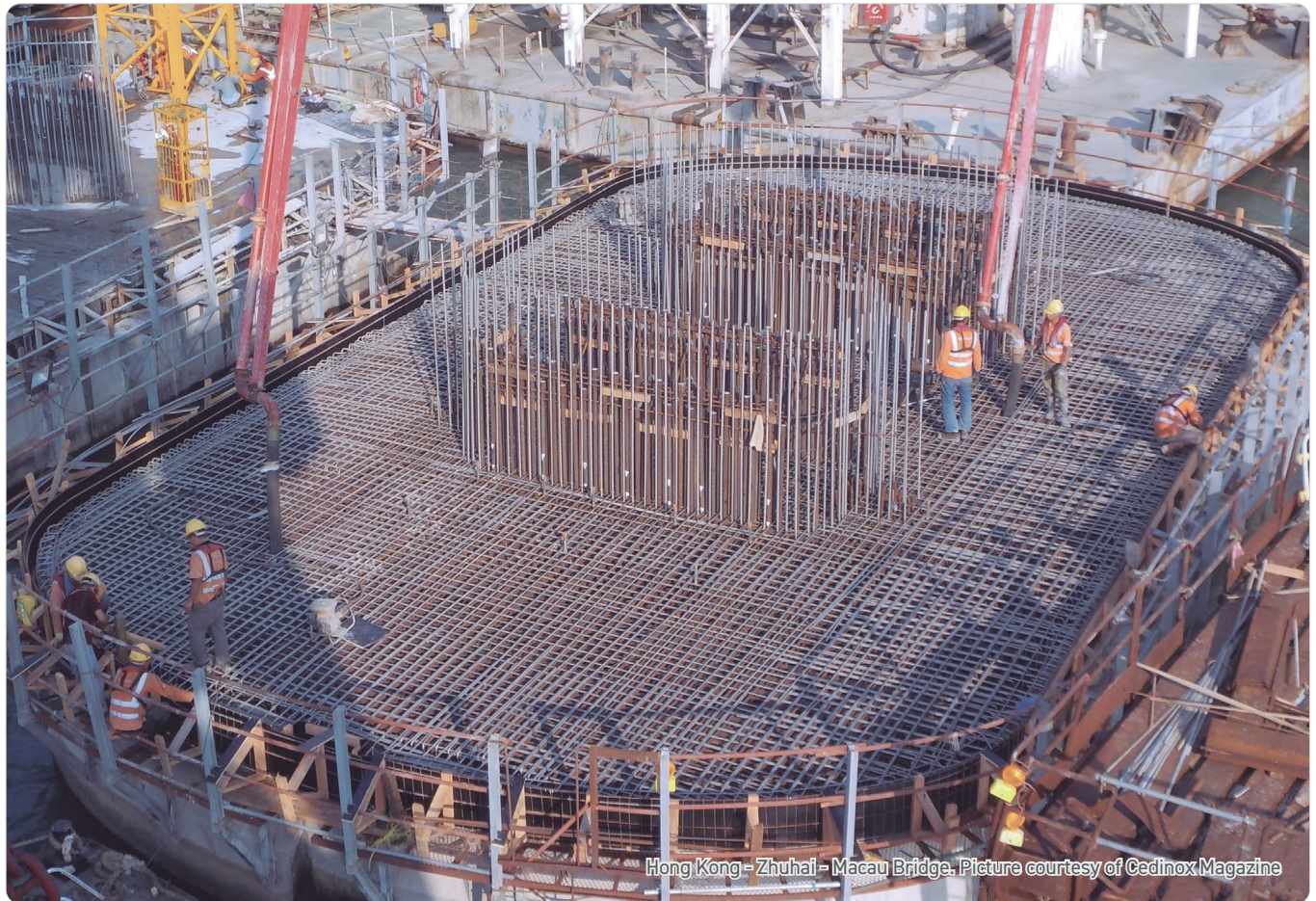
Location:	Hong Kong, China
Crosses:	Lingdingyang of Pearl River Estuary
Type:	cable-sayed bridge for roadway
Opened in:	2018
Materials:	EN 1.4362 rebar, ROLDAN
Stainless steel products:	rebar
Structural designer:	Arup
Photographs:	courtesy of Cedinox magazine
More information:	<a href="http://cedinox.es">cedinox.es</a>





## Why stainless steel?

Stainless steel reinforced bars have proved to be the right, intelligent and cost-effective solution when used in an aggressive atmosphere or where access to areas potentially needing repair is difficult or even impossible. To build this mega-structure, stainless steel rebar made in Spain by ROLDAN has been used to achieve the highest quality standards.



## History

A landmark bridge linking Hong Kong - Zhuhai - Macau is playing a strategic role and strengthening the economic development of this area. The

construction began in 2009 and it has opened in 2018. When this magnificent bridge has been opened to traffic it only takes 40 minutes by car to go from Zhuhai to Hong Kong instead of 3 and a half hours.

The bridge is 55 km long, and the project also includes the construction of two artificial islands and a dual 3-lane tunnel that is the longest in the world of its kind.





## Nou Road Bridge



Nou Road Bridge. Picture courtesy of JSSA.

Location:	Nou, Itoigawa, Niigata Prefecture, Japan
Crosses:	Nou river
Type:	girder bridge for roadway
Opened in:	2012 (renovation)
Materials:	SUS410, NIPPON STEEL Stainless Steel Corporation
Stainless steel products:	rebar
Architects:	shin Kouzou Gijutu
Fabricator:	Mitsui-Sumitomo Construction
Photographs:	courtesy of JSSA
More information:	<a href="http://jssa.gr.jp">jssa.gr.jp</a>

## History

The concrete road bridge of a coastal road in the West of Japan had developed severe corrosion in its formwork. Besides the chloride-bearing marine atmosphere, the use of de-icing salts in winter was another cause of the damage.

### Why stainless steel?

For the refurbishment of the bridge, the selective use of ferritic stainless steel was a rational and cost-saving choice. Out of the four spans of the bridge structure, the exposed outer two needed to be replaced. The new concrete spans were cast on site and reinforced with type SUS410 17% chromium stainless steel, which ideally fulfilled both the corrosion resistance and cost reduction requirements. While the use of stainless steel reinforcement in new roads and bridges is not uncommon, this case shows that the stainless steel option is also technically and economically viable in repair and renovation.



Nou Road Bridge. Picture courtesy of JSSA.





## Bridge Cover



Bridge Cover. Picture courtesy of NIPPON STEEL Engineering Co., LTD.

Location: Tokyo, Japan  
Crosses: railway  
Materials: SUS430J1L plate, NIPPON  
STEEL Stainless Steel  
Corporation  
Stainless steel products: cover plate  
Photographs: Courtesy of NIPPON STEEL  
Engineering Co., LTD.



## History

In Japan, the importance of inspection and maintenance of bridges is now recognized more. In order not only to prevent serious accidents, but also to effectively use bridges, which are an important social infrastructure, it is necessary to extend the life of bridges through periodic inspections and planned repairs. This cover plate is a product to meet the need for preventive maintenance and long life of bridges. It is a permanent cover protected from deterioration factors such as wind, rain, solar radiation, and salinity, and it serves also as a permanent scaffolding that allows for safe and reliable visual inspection and repair work at any time.

## Why stainless steel?

This is a high-performance exterior material for bridges that uses coated stainless steel with excellent durability for the exterior. By using stainless steel, durability of 100 years is expected. By using ferritic SUS430J1L, 3 major outcomes were achieved; (1) sufficient corrosion resistance, (2) a linear expansion coefficient close to carbon steel, and (3) cost stability. In addition to being able to expect longer-term durability by applying fluorine resin coating, it is also possible to deal with situations where harmony with the surrounding landscape is required as the coating can be different colors.





## Sheikh Jaber Al-Ahmad Al-Sabah causeway



Sheikh Jaber Al-Ahmad Al-Sabah causeway. Picture courtesy of Hyundai.

Location:	Kuwait
Crosses:	Kuwait Bay
Type:	cable-stayed bridge for roadway
Opened in:	2019
Materials:	Forta DX 2304, Outokumpu
Stainless steel products:	rebar
Contractors:	Hyundai Engineering and Combined Group Contracting
Photographs:	Courtesy of Outokumpu and Hyundai
More information:	<a href="http://outokumpu.com">outokumpu.com</a>

Sheikh Jaber Al-Ahmad Al-Sabah causeway. Picture courtesy of Hyundai.



## History

One of the largest and most prestigious transport infrastructure endeavors in Kuwait and the region, the Sheikh Jaber Al-Ahmad Al-Sabah causeway stretches like a shimmering ribbon across Kuwait Bay – and in the process, dramatically improves access to the country's northern regions. Reducing drive time between Kuwait City and the Subiyah area from 70 minutes to less than 20 minutes, the causeway provides new strategic highway routes to facilitate planned development north of Kuwait City. Integrating the northern regions of the country with the densely populated central and southern regions, the causeway is also expected to reduce traffic congestion and improve safety. The causeway was officially inaugurated in May 2019.



Sheikh Jaber Al-Ahmad Al-Sabah causeway. Picture courtesy of Outokumpu.

## Why stainless steel?

The 36-kilometer causeway was constructed on piles bored into the seabed. The signature cable-stayed bridge with an exquisite arch pylon faces unique challenges in a marine environment adjacent to heavily populated areas.

Salt water and carbon dioxide emissions pose significant threats. Forta duplex stainless steel rebar injects the project with high strength, exceptional corrosion resistance and reduced lifecycle costs. Reinforced concrete combines low cost, versatility and high strength. However, over time the process of

carbonation means that concrete loses the high alkalinity that protects carbon steel from corrosion. Stainless steel does not rely on concrete for its corrosion protection and is a straightforward solution when concrete is subject to the ingress of chlorides from marine environments.



## Queensferry Crossing



Queensferry Crossing. Picture courtesy of Cedinox Magazine.

Location:	Scotland, United Kingdom
Crosses:	River Forth (Firth of Forth)
Type:	Cable-stayed bridge for roadway
Opened in:	2017 (replacement)
Materials:	EN 1.4401 (316) wire rod, Roldan
Stainless steel products:	Cable assemblies
Construction:	Forth Crossing Bridge Constructors (FCBC)
Photographs:	Courtesy of Cedinox magazine
More information:	<a href="http://acerinox.com">acerinox.com</a>

## History

The Queensferry Crossing opened to traffic on 30 August 2017. It is the longest three-tower, cable-stayed bridge in the world and the highest bridge in the UK.

The Forth Replacement Crossing (FRC) is a major infrastructure project for Scotland, designed to safeguard a vital connection in the country's transport network, linking Edinburgh and Fife. The FRC project enables the existing Forth Road Bridge to be maintained as a dedicated public transport corridor as part of a Managed Crossing strategy. It carries public transport, pedestrians and cyclists and in the future, it could also be adapted to carry a Light Rapid Transit system.

### Why stainless steel?

Stainless steel wire rod has been used in this project due to its excellent corrosion resistance even in chloride environments, high strength and ductility.



Queensferry Crossing. Picture courtesy of Cedinox Magazine.





## Cala Galdana Bridge



Cala Galdana Bridge. Picture courtesy of PEDELTA and Outokumpu.

Location:	Menorca, Spain
Crosses:	Algendar River
Type:	Arch bridge for roadway
Opened in:	2005
Materials:	Forta DX 2205 plate, Outokumpu
Stainless steel products:	The load bearing arches and support beams for the concrete deck
Structural designer:	PEDELTA
Photographs:	Courtesy of PEDELTA and Outokumpu
More information:	<a href="http://outokumpu.com">outokumpu.com</a>



## History

For 30 years, a reinforced concrete arch bridge spanned the Algendar River on Menorca, Spain. But the harsh marine environment took its toll over time, causing severe structural damage. So in 2003, the Consell Insular de Menorca, decided that Cala Galdana needed a new road and pedestrian bridge to fit the setting, which is a UNESCO biosphere reserve. The new Cala Galdana Bridge became the first stainless steel road bridge in Europe when it opened in June 2005. Tourists can all enjoy the panoramic views of Cala Galdana's beaches available from the its 55 m-long, 13 m-wide walkway.

### Why stainless steel?

It would be designed for longevity and ease of maintenance. And, given the natural beauty of the area, it needed to be environmentally friendly. The engineers selected Forta DX 2205 duplex stainless steel, which offers high tensile strength and unbeatable durability in coastal environments due to its resistance to corrosion. In addition, stainless steel is 100% recyclable, so it is environmentally friendly. And the high ductility of Forta DX 2205 steel means it can easily be used for attractive modern designs such as that of the Cala Galdana Bridge.



Cala Galdana Bridge. Picture courtesy of PEDELTA and Outokumpu.



Cala Galdana Bridge. Picture courtesy of PEDELTA and Outokumpu.



## New Malizia Bridge



New Malizia Bridge. Picture courtesy of Centro Inox.

Location:	Siena, Italy
Crosses:	railway
Type:	Arch bridge for roadway
Opened in:	2005 (replacement)
Materials:	Uranus 35N plates, Industeel Italia Srl
Stainless steel products:	Arch
Architects:	Arch. Paola D'Orsi, Comune di Siena
Photographs:	From Inossidabile - Courtesy of Centro Inox
More information:	<a href="http://centroinox.it">centroinox.it</a>

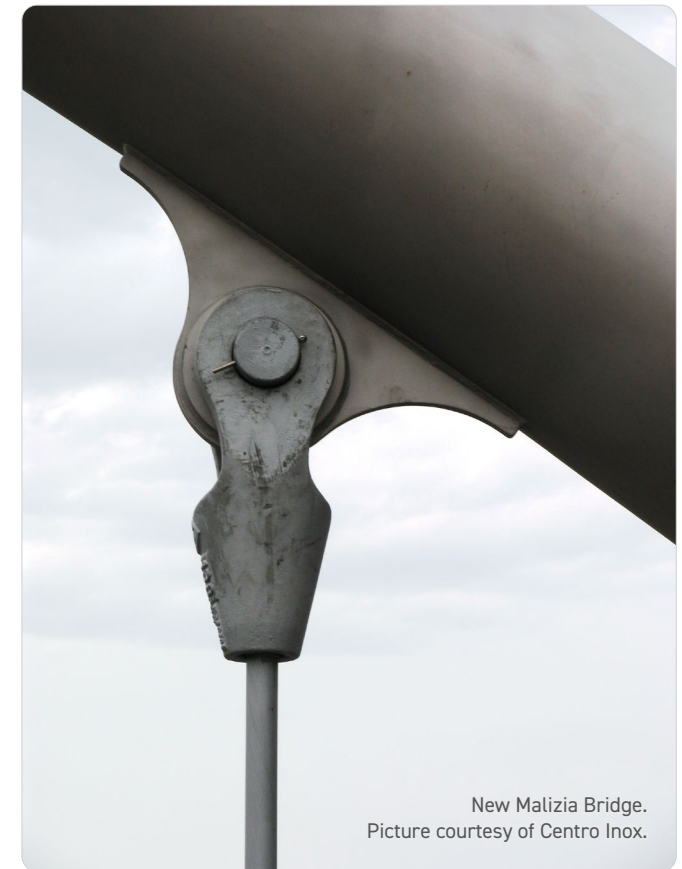


## History

The project for the reconstruction of the Malizia bridge arose both from the need to improve the flow of traffic and that of inserting an element into the landscape which was architecturally qualifying for the town of Siena. A functional and technologically innovative solution for a bridge which will cross over the vast railway seat below was found in the construction of a large arch, positioned between the two previously built carriageways.

### Why stainless steel?

Uranus 35N duplex stainless steel was chosen for the construction of the arch, made up of 5 segments of welded tube, with an external diameter of 820 mm, obtained from plates with a thickness of 35 mm and width of 2,480 mm, supplied simply pickled. The segment tubes of the arch, each 10,700 mm long, were brake formed and joined longitudinally by submerged arc welding. A second brake forming process gave the elements their correct curvature. Lastly, the connections for the hangers were then inserted and welded. The external surface was shot-blasted using grit and protected by means of adhesive plastic.





## New bridge on the river Brenta



New bridge on the river Brenta. Picture courtesy of Centro Inox.

Location:	Corte di Pieve di Sacco, Italy
Crosses:	River Brenta
Type:	Arch Bridge for roadway
Opened in:	2006
Materials:	URANUS 35 N Duplex 2304 (EN 1.4362), Industeel Gruppo ArcelorMittal
Stainless steel products:	Arches
Architects:	Prof. Ing. Enzo Siviero
Photographs:	From Inossidabile - Courtesy of Centro Inox
More information:	<a href="http://centroinox.it">centroinox.it</a>



## History

A formal and functional simplicity characterizes the new bridge on the river Brenta built in Corte di Pieve di Sacco, near the city of Padua.



New bridge on the river Brenta.  
Picture courtesy of Centro Inox.

## Why stainless steel?

The bridge is characterized by a pair of 16.5 m-high twin arches made of 2304 (EN 1.4362) duplex stainless steel with a 1,300 mm diameter round section and thicknesses ranging from 12 to 26 mm, weighing in total 110 tons, which rest on two elliptically shaped piers and are linked up by cross-section stainless steel connections. The transversal section is formed by two driving lanes for vehicles, each 4.75 m wide, and by two 2.00 m-wide sidewalks, which provide easy transit to pedestrians and cyclists. The framework has a total length of about 120 m and consists of a system of longitudinal beams made of S355 steel with a HE-type profile, connected by a 30 cm-thick concrete slab. The bridge is externally lined with

an EN 1.4304 (AISI 304) stainless steel cladding, while it is supported in the central part by four hanging steel rods. These hanging rods support, in turn, two cross girders, which come out of the framework shell. The use of stainless steel in the construction of public works, such as for example bridges, cuts down the time spent in the building yard, and ensures resistance to corrosion, long life and performance, reduced maintenance operations, and considerable money saving. Today, in the case of metal bridges, the use of duplex stainless steels represents an innovative planning solution as these steels, in addition to high resistance to corrosion, have also considerable mechanical resistance, fatigue resistance, and weldability properties.



New bridge on the river Brenta.  
Picture courtesy of Centro Inox.



## Nynäshamn Road Bridge



Location: Nynäshamn, Sweden  
Crosses: river  
Type: Beam Bridge for roadway  
Opened in: 2011  
Materials: Forta LDX 2101 plate,  
Outokumpu  
Stainless steel products: The supporting beams  
Photographs: Courtesy of Outokumpu  
More information: [outokumpu.com](http://outokumpu.com)

Nynäshamn Road Bridge. Picture courtesy of Outokumpu.





## History

Located 60 miles from Stockholm in Sweden's Södermanland province, the Nynäshamn locality is a scenic harbour town with under 14,000 inhabitants and ferry links to Poland, Latvia and the Baltic island of Gotland. Small, but with a long history – with Iron Age grave fields and rune stones littering the countryside – it's an area with substantial local, tourist, and industrial vehicle traffic. It also requires quality road bridges that protect the public purse and offer low Total Cost of Ownership (TCO). The Nynäshamn bridge was completed in 2011. Today, it sees a great deal of daily vehicular traffic, it has an expected design life of around 80 years.

### Why stainless steel?

Bearings are often a vulnerable part of many structures. They carry loads while allowing movements resulting from thermal expansion or from carrying loads. However, bearings require regular maintenance. Therefore, to achieve a maintenance-free bridge the Nynäshamn bridge was designed without bearings. Instead, it features a stiff frame with the abutments integrated into the load bearing structure. Forta LDX2101-grade stainless steel I-beams – allowing the 42m long bridge to form a stiff frame with no bearings at all required at the supports.



Nynäshamn Road Bridge. Picture courtesy of Outokumpu.

## Allt Chonoglais Bridge



### History

The Allt Chonoglais was the fourth bridge in the Scottish Government's £24 million upgrade program for bridges along the A82 road. Surveys found that the original 1932 bridge was too weak to meet future traffic needs, partly due to irreversible chloride-induced corrosion from decades of exposure to de-icing salts. Rather than replacing or refurbishing the bridge in sections, the government decided to replace the load-bearing parts of the bridge with a strong and low-maintenance steel structure, while

retaining the granite stonework from the original bridge.

The Allt Chonoglais was completed ahead of schedule in September 2013. At 40 metres long, the bridge caters to the demands of modern-day traffic while featuring elements of the original bridge, including locally sourced granite and the original bridge supports. In addition, no changes were made that would impact the habitat of the riverbank below. Stainless steel will continue to provide a safer, robust and modernised bridge for at least 120 years.

Location:	Scotland, UK
Crosses:	River Kinglass
Type:	bridge for roadway
Opened in:	2013 (replacement)
Materials:	Forta DX 2304, Outokumpu
Stainless steel products:	rebar
Structural designer:	Scotland Transerv, Glasgow
Photographs:	courtesy of Outokumpu
More information:	<a href="http://outokumpu.com">outokumpu.com</a>

### Why stainless steel?

The main priority for the bridge was to have greater resistance to chloride corrosion. This meant anticipating which areas of the bridge would be exposed to de-icing salts during the winter months and specifying high-performance materials to ensure a long life. Critical concrete sections of the bridge were reinforced with the lean duplex alloy, Forta DX 2304 rebar, which combines competitive cost and chloride resistance, ensure long-term integrity of the reinforced concrete structure.





## Junction Värtan



Junction Värtan. Picture courtesy of Outokumpu.

Location:	Stockholm, Sweden
Crosses:	roadway
Type:	junction in a roadway
Opened in:	2015
Materials:	Forta LDX 2101, Outokumpu
Stainless steel use:	rebar
Contractors:	Skanska
Photographs:	courtesy of Outokumpu
More information:	<a href="http://outokumpu.com">outokumpu.com</a>

## History

The Swedish capital Stockholm looks to a future with less traffic in the city: traffic will soon be re-routed away from the centre to a new ring road around Stockholm, complete with an urban motorway named Norra Länken – Northern Connection. Completed in phases by 2017, Norra Länken constitutes Sweden's largest road construction project to date.

The new motorway, which largely runs in tunnels, connects Sweden's main Baltic port at the Värta harbour (Värtahamnen) with the national Swedish and European road networks. Traffic flows will be joined in the major Junction Värtan at the harbour. Construction of this junction, realized with overpasses, takes four years and consumes ten thousand truckloads of concrete alone.



Junction Värtan. Picture courtesy of Outokumpu.



Junction Värtan. Picture courtesy of Outokumpu.

## Why stainless steel?

Junction Värtan should serve largely maintenance free for a very long time. To achieve this goal, the Stockholm Road Authority specified stainless steel reinforcement for the concrete structures from the very beginning of the design process, aware of the many benefits of stainless that would enable the long life span. Roads in northern climates are particularly corrosive environments due to chlorides from de-icing salts. Stainless steel reinforcement bars, rebars for short, are an insurance against corrosion, which could result in structural failure. As such, stainless steel rebars help

to avoid expensive repairs and resulting disruption to traffic.

The stainless grade austenitic EN 1.4404 (ASTM 316) was a standard grade used in corrosive conditions but lean duplex stainless steel LDX 2101® was introduced as a replacement for 1.4404. "Duplex LDX 2101® equals 1.4404 in terms of corrosion resistance. But as a low-alloyed stainless steel, LDX 2101® is far more cost efficient. It's very low nickel content results in good price stability, so it brings the benefit of much welcome predictability for long-term projects against fluctuations in the nickel price."





## Slussen Bridge



Slussen Bridge. Picture courtesy of Skanska.

Location:	Stockholm, Sweden
Crosses:	Lake Mälaren
Type:	traffic junction
Opened in:	under construction
Materials:	1.4162 and 1.4362, Outokumpu
Stainless steel products:	rebar
Costruction:	Skanska Construction
Photographs:	Courtesy of Outokumpu and Skanska
More information:	<a href="http://outokumpu.com">outokumpu.com</a>



## History

An archipelago of islands, the city of Stockholm is surrounded by water. Connecting two of those islands – Södermalm and the Old Town – is Slussen, an area that was created in the 17th century as a lock. Originally built as a means for easing navigation between the Baltic Sea and Lake Mälaren, Slussen is currently undergoing an upgrade by the city of Stockholm.

Rebuilt at least four times over the centuries, the area is home to Sweden's second largest transportation hub. What was planned as a traffic junction atop the lock now sees over 486,000 travellers pass over it every day. Problems with the foundations as well as rusting reinforcements and crumbling cement made it clear that the Slussen lock and the area surrounding it needed reconstruction to better serve the community.

After it is completed, the new lock will safeguard Stockholm's drinking water supply from Lake Mälaren for the future. The Slussen area will become a central meeting point for residents, housing glass-facaded buildings that appear inviting to passersby and a plaza that can serve as a public meeting area. A new bus terminal and rethought means of transportation – both on land and via boat – will give more space to all means of traffic, including bicycles and pedestrians.



Slussen Bridge. Picture courtesy of Outokumpu.



Slussen Bridge. Picture courtesy of Outokumpu.

## Why stainless steel?

For use in the quays and embankment upgrades, Skanska Construction has thus far ordered stainless steel rebar in the EN 1.4162 and EN 1.4362 grades. The rebar is a reliable stainless steel support recommended for use in coastal barrier construction and bridges

to offer unprecedented long-lasting support in areas where corrosion due to chloride is a risk. With reduced maintenance necessary, this stainless steel rebar will prove to be of longer-lasting support, giving it price advantages over the long term.





## Flottsund Bridge



Flottsund Bridge. Picture courtesy of Outokumpu.

Location:	Flottsund, Uppsala, Sweden
Crosses:	river
Type:	opening bridge for roadway
Opened in:	2017
Materials:	Forta DX 2205 plate, Outokumpu
Stainless steel products:	structure for the opening bridge part
Architects:	ÅF
Structural designer:	Betong och stålteknik
Photographs:	courtesy of Outokumpu
More information:	<a href="http://outokumpu.com">outokumpu.com</a>



## History

Situated in Sunnersta, Southern Uppsala, the Flottsund bridge is a key connection for the city and the county. Linking Dag Hammarskjöld's Road with Country Road 255, it's been a vital route for car, bicycle, and pedestrian traffic entering and leaving the Fyrisån harbor basin – and one with a history of bridges that dates back to the 17th century. In fact, owing to the area's strong spring rivers, several of these bridges have been destroyed. The previous bridge had been built in 1924 and had served the area well for many decades. But with its condition deteriorating – its wooden frames were in a particularly poor state – and traffic requirements only increasing, it was clear to Uppsala County that it was time for a change.

The new Flottsund Bridge blends seamlessly into the Uppsala landscape – without overwhelming it. It can be raised and lowered ensuring that road and river traffic can flow freely. The Flottsund bridge is a serious aesthetic, structural, and engineering accomplishment.

## Why stainless steel?

The design was an opening bridge with solid connecting parts – intended to be wider than the original, with two lanes for vehicle traffic and separate walking and cycle lanes on each side. To minimize the environmental impact of the bridge, the designers decided to forgo hydraulics to eliminate the risk oil leakage. Instead, they adopted a 'panama wheel' which uses powerful electric motors to drive a geared wheel that raises the bridge deck.

The unique requirements of this design called for a composite construction: one which would bring concrete and stainless steel together to emphasize form, function, and a smooth opening mechanism. The material for this the moving bridge deck: 130 tons of Forta DX 2205-grade duplex stainless steel was supplied. The benefit of duplex is its high strength, meaning smaller and lighter bridge deck. In turn, this requires less energy to operate and less powerful motors, saving the cost of the motors as well as utility bills.



Flottsund Bridge. Picture courtesy of Outokumpu.





## Second Gateway Bridge



Second Gateway Bridge. Picture courtesy of Leighton Abigroup Joint Venture ABN.

Location:	Brisbane, Australia
Crosses:	Brisbane River
Type:	girder bridge for roadway
Opened in:	2010
Materials:	duplex stainless steel LDX2101, Outokumpu
Stainless steel products:	rebar
Photographs:	Courtesy of Leighton Abigroup Joint Venture ABN
More information:	<a href="http://assda.asn.au">assda.asn.au</a>



Second Gateway Bridge.

Picture courtesy of Leighton Abigroup Joint Venture ABN.

## History

The Gateway Bridge in Queensland, Australia, is really one of those architectural marvels. The unique structure of the bridge crossing the Brisbane River was the first of its kind when built in 1986, with a record-breaking main span of over 260 meters stretching between two main piers. Reaching a height the equivalent of a 20-story building, the four-lane bridge had to be tall enough to allow boats to

pass beneath yet low enough to accommodate the flight patterns of the nearby airport. After designers came up with the four-lane solution that connects the eastern suburbs of Brisbane to the city, growth in the suburbs had created an increase in traffic on the bridge. In 2005, an expansion and duplication was announced. The already-standing four-lane motorway was increased to six lanes; just a few meters away, a second bridge duplicating the look of the first began to take shape.



Second Gateway Bridge.

Picture courtesy of Leighton Abigroup Joint Venture ABN.

## Why stainless steel?

Creating a 1,627 meter bridge with fully submerged foundations proved quite the architectural challenge. What made it even more challenging, was the government's request that the bridge maintain a 300-year service life – something that had never been tested before. That's where stainless steel rebar came into play. To limit the possibility of corrosion and therefore reduce the need for renovations, the bridge includes stainless steel on the two piers that are submerged. Just 130 of the 7,800 tonnes of steel used in the Second Gateway Bridge were stainless steel, which kept costs low. The design-life target is a testament to the size and importance of the bridge; it also showed the recognition that although initial costs may be higher, in the long-term, the savings on repairs and extended time the bridge is in use pay off those costs. When construction finished in 2010, the results were experienced by everyone who used the bridge, with some commuters noting they spent between 10 to 25 minutes less time in traffic. With the stainless steel reinforced piers, those smoother commutes will continue for centuries to come.





## Story Bridge



Story Bridge. Picture courtesy of Atlas Steels.

Location:	Brisbane, Australia
Type:	cantilever bridge for roadway
Opened in:	2015
Materials:	316/316L, , Atlas Steels, Anzor Fasteners, Ronstan Tensile Architecture
Stainless steel products:	mesh, I-beam, angle bar, polished tube, coupling cable
Structural designer:	Freyssinet
Photographs:	courtesy of Atlas Steels
More information:	<a href="http://assda.asn.au">assda.asn.au</a>

## History

The 76-year old heritage-listed cantilever bridge now incorporates three-metre tall, stainless steel safety barriers on its pedestrian walkways. The \$8.4 million project was completed in December 2015.

The design brief was to develop an anti-climb structure that was both functional and aesthetically appealing, whilst ensuring the heritage values of the bridge were maintained. This presented a number of engineering challenges, including the affixation of the barrier structure to the existing heritage-listed bridge without permanent methods of attachment, such as welding or other damaging techniques, whilst addressing the weight and wind load tolerances, ambient vibrations and noise potential. Visually, there was also a key design requirement to ensure pedestrian views of the river, Brisbane city and surrounds, and of the Story Bridge itself, was preserved.



Story Bridge. Picture courtesy of Atlas Steels.

## Why stainless steel?

The concept solution delivered was a dynamic structural design that met the exacting demands of the specification. The design evolved to using laser-fused stainless steel open section beams for the posts, positioned approximately three metres apart with a

blackened Carl Stahl X-TEND® stainless steel mesh barrier. The blackened Carl Stahl X-TEND® mesh was the key to achieving an unobtrusive composition and historical aesthetic, while providing the flexibility and tensile strength required for the structure's design and use of the laser-fused posts. The structure is

a pivotal safety addition to the Story Bridge and exudes functionality in its excellent and unique engineered design. Stainless steel is unmatched in the materials selection for providing durability, structural performance, low maintenance, corrosion resistance and aesthetics.





## Go-Between Bridge



Go-Between Bridge. Picture courtesy of ASSDA.

Location:	Brisbane, Australia
Crosses:	Brisbane River
Type:	cantilever, box girder bridge for roadway
Opened in:	2010
Materials:	316L/1.4462 Reval® 316L, Valbruna Australia
Stainless steel products:	rebar
Photographs:	courtesy of ASSDA
More information:	<a href="http://assda.asn.au">assda.asn.au</a>



## History

Formerly known as the Hale Street Link, the Go-Between Bridge connects Merivale and Montague Streets in West End to Coronation Drive and the Inner City Bypass in Milton. Constructed as part of the Brisbane City Council's TransApex plan, the Go-Between Bridge was designed to improve cross-river accessibility, reduce inner city traffic congestion, increase accessibility to Brisbane's recreational and cultural precincts and cater for future residential developments in West End and South Brisbane. The cantilever, box girder bridge stretches 274 metres over the Brisbane River and was built using stainless steel reinforcement with concrete foundations. Featuring a dedicated pedestrian and cyclist pathway, the Go-Between Bridge is 27 metres wide, with the main span measuring 117 metres. Named after iconic Brisbane rock band The Go-Betweens, the Go-Between Bridge was completed and officially opened to traffic in July 2010 with 14,000 vehicles crossing Brisbane's Go-Between Bridge every day.

### Why stainless steel?

80 tonnes of grade 316L/1.4462 Reval® stainless steel in 12 mm, 16 mm, and 24 mm reinforcement bar, which was used for the two major pile caps and north abutment of the bridge, were supplied. Stainless steel was specified for the critical elements of the bridge to minimise life cycle costs, improve structural integrity and corrosion resistance. Particularly being located in a marine environment, Reval® stainless in reinforced

concrete is ideal to resist chlorides and pitting corrosion. It has an expected service life of 100 years in concrete. By specifying stainless, the designers were able to reduce the area in which stainless rebar was used in the structure because of its tensile strength being higher than carbon steel. In addition, using stainless steel reinforcement in concrete structures is stronger than carbon steel and will prevent material fatigue ensuring longevity for public infrastructure.



## Railway bridges

## Söderström Bridge



Location: Stockholm, Sweden  
Crosses: river  
Type: bridge for railway  
Materials: Forta LDX 2404 plate,  
Outokumpu  
Stainless steel products: the whole supporting  
structure  
Fabricator: Stål & Rörmontage  
Photographs: Courtesy of Stål & Rörmontage  
More information: [outokumpu.com](http://outokumpu.com)



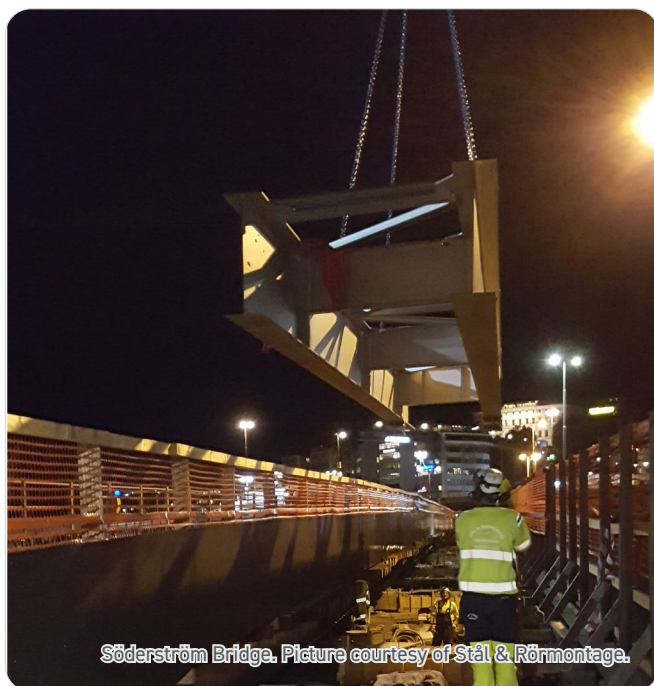
## History

The Söderström Bridge complex comprises four 174-metre long railway bridges. First opened in 1957, it connects Stockholm's Old Town to its Södermalm district and on to southern Sweden – so it is crucial for the city's subway traffic, facilitating over 330,000 passenger trips each day, equivalent to one train every three minutes. The bridges required maintenance in 2017.

The renovated Söderström Bridge complex is not only safer, but also able to support even higher traffic volumes. And since the bridge's bearing capacity is vital for freight as well as passenger trains entering and leaving Stockholm, this enhanced ability to handle high volumes of traffic will provide a big advantage for the city and its residents for decades to come.

## Why stainless steel?

The original Söderström Bridge was built using carbon steel. This is strong and durable – both desirable qualities in a bridge – but it is also vulnerable to corrosion. Forta LDX 2404 duplex stainless steel beams were recommended for the material that would reduce future maintenance requirements. This steel offers good resistance to localised and uniform corrosion, as well as high strength and resistance to cracking.



Söderström Bridge. Picture courtesy of Stål & Rörmontage.



Söderström Bridge. Picture courtesy of Stål & Rörmontage.



## Añorga Railway Bridge



Añorga Railway Bridge. Picture courtesy of Outokumpu and Photographer Havas Worldwide Helsinki

Location:	San Sebastián, Spain
Crosses:	roadway
Type:	railway bridge
Opened in:	2011
Materials:	Forta DX 2205 plate, Outokumpu
Stainless steel use:	full stainless bridge
Photographs:	courtesy of Outokumpu and Photographer Havas Worldwide Helsinki
More information:	<a href="http://outokumpu.com">outokumpu.com</a>





Añorga Railway Bridge. Picture courtesy of Outokumpu and Photographer Havas Worldwide Helsinki

## Why stainless steel?

The bridge is exposed to rain and the previous bridge had required intensive maintenance over its lifespan, so it was crucial that the materials used for the new bridge would be corrosion resistant. Outokumpu supplied Forta LDX 2101 grade duplex stainless steel as it is light, durable and corrosion resistant, which reduces maintenance and renovation needs. The structure is the first railway bridge fully designed in stainless steel and it is performing well, with no sign of corrosion since it was completed in 2011.

## History

The Añorga railway bridge in San Sebastián is an essential part of a line that carries local and commuter trains along the railway line that follows

the coast of northern Spain. A previous carbon steel bridge structure had been damaged beyond repair due to heavy corrosion. The local authority placed an order for a replacement in stainless steel to last 130 years without major maintenance.



Añorga Railway Bridge. Picture courtesy of Outokumpu and Photographer Havas Worldwide Helsinki

## Pedestrian bridges





## Pedestrian Bridge at Kwa-Zulu Natal



Pedestrian Bridge at Kwa-Zulu Natal. Picture courtesy of Columbus Stainless.

Location:	Durban, South Africa
Crosses:	railway (Warner Beach Station)
Type:	girder bridge for pedestrians
Opened in:	late 1990s (replacement)
Materials:	3CR12, Columbus Stainless
Stainless steel products:	rebar
Photographs:	courtesy of Columbus Stainless
More information:	<a href="http://columbus.co.za">columbus.co.za</a>

## History

In South Africa, the failures attributed mainly to the corrosion of the rebar are prevalent along the coast and are mainly attributed to wind-borne salt carried inland due to strong prevailing winds. A classic example is of a series of pedestrian bridges installed on the KwaZulu Natal south coast, located about 60km and 120km south of Durban. The location of the bridges span rivers at their outflow into the sea, therefore the bridges are exposed

throughout their existence to regular heavy spray from breaking waves during onshore and alongshore winds. These bridges were constructed in the 1950s using concrete reinforced with uncoated mild steel rebar. Over the course of the years, severe spalling and falling concrete was experienced. During the course of the mid 1990's, after 40 years in service, an extensive and expensive rehabilitation process was embarked on to repairs the structural integrity and safety of these bridges.



Pedestrian Bridge at Kwa-Zulu Natal. Picture courtesy of Columbus Stainless.

## Why stainless steel?

Due to extensive catastrophic failure of the existing bridges, 3CR12 reinforcing bar was proposed. A series of bridges were installed along the coast, following the success 5 years of research in accelerated corrosion conditions. Examination of these bridges after 20 years in service reveals that 3CR12 rebar has demonstrated itself to be economically viable in this application, even in this harsh marine environment. 3CR12's self-repairing characteristics of the chrome oxide layer means the corrosion protection integrity is maintained even if mechanically damaged during handling. The advantages received are high strength, less maintenance and lower life cycle cost compared to the conventional carbon steel reinforced structure.





## Garrison Crossing (Fort York Pedestrian and Cycle Bridge)



Location:	Toronto, Canada
Crosses:	Rail corridors
Type:	Arch Bridge for pedestrians
Opened in:	2019
Materials:	UR 2205 Duplex stainless steel plate 300 tons, Industeel
Stainless steel products:	all stainless steel bridge
Architects:	CreateTO
Structural designer:	PEDELTA
Photographs:	Courtesy of PEDELTA
More information:	<a href="http://industeel.arcelormittal.com">industeel.arcelormittal.com</a>

## History

Designed by Pedelta Canada Inc., a member of the Dufferin Construction Company team, Garrison Crossing features the first stainless steel bridges to be built in Canada. Garrison Crossing features two bridge structures spanning two rail corridors in downtown Toronto. One bridge structure spans from the South Stanley Park extension over the Kitchener rail corridor and lands on the north side of Ordinance Triangle Park. The second bridge structure begins on the south side of Ordinance Triangle Park and spans over the Lakeshore West rail corridor, landing in the Fort York grounds.

### Why stainless steel?

Duplex stainless steel was chosen because of its exceptional mechanical properties: it has a unique and beautiful appearance, it is highly durable, lightweight and corrosion and weather resistant, requires less maintenance and provides reduced life-cycle costs. Aside from the concrete deck and wood handrails, Garrison Crossing is comprised entirely of stainless steel. The north bridge structure is 130 metric tonnes and the south bridge structure is 125 metric tonnes.



Garrison Crossing. Picture courtesy of PEDELTA.





## Harbor Drive Pedestrian Bridge



Harbor Drive Pedestrian Bridge. Picture courtesy of iStock.

Location:	San Diego, USA
Crosses:	Roadway and railway
Type:	Suspension bridge for pedestrians
Opened in:	2011
Materials:	Forta DX 2205, 317LMN (cable support system), Outokumpu
Architects:	Rabines Architects
Photographs:	Courtesy of iStock/ Michael Svoboda
More information:	<a href="http://outokumpu.com">outokumpu.com</a>

## History

The new landmark footbridge provides pedestrian access between the city's spectacular Balboa Park and the picturesque natural harbour of San Diego Bay, spanning six railroad tracks and several lanes of vehicle traffic.

### Why stainless steel?

Designed to serve over 100 years, the bridge is built with a material that enables reliable, maintenance-free service over the design life in the maritime Pacific climate: duplex stainless steel of Forta DX 2205. Other key reasons for the material choice were aesthetics and strength.



Harbor Drive Pedestrian Bridge. Picture courtesy of iStock.





## New Farm Riverwalk



New Farm Riverwalk. Picture courtesy of Cedinox Magazine

Location:	Brisbane, Australia
Crosses:	Brisbane river
Type:	Girder bridge for pedestrians
Opened in:	2014 (replacement)
Materials:	AISI 316L plate 158 tons, COLUMBUS STAINLESS Duplex EN 1.4362 rebar, Valbruna
Stainless Steel products:	Rebar, structural and aesthetic parts
Engineering:	Arup
Fabricator:	MIDWAY METALS
Photographs:	Courtesy of Cedinox magazine
More information:	<a href="http://cedinox.es">cedinox.es</a>

## History

Brisbane's New Farm Riverwalk is one of the city's beloved icons. Originally constructed in 2003, the Riverwalk was used daily by over 3000 cyclists, pedestrians and runners before it was washed away during the 2011 floods. After a construction period of nearly 18 months, Brisbane City Council's re-imagined New Farm Riverwalk opened to the public, connecting New Farm to the Brisbane City via the Howard Smith Wharf Precinct.

### Why stainless steel?

Engineered by Arup, the Riverwalk has a design life of 100 years and sits 3.4 m above mean sea level on robust piles. Critical to its design and life expectancy is the extensive use of stainless steel for both structural and aesthetic purposes. Brisbane City Council's two key objectives of the project were to achieve a low maintenance and durable structure while achieving high aesthetic qualities. Stainless steel was deemed suitable to achieve both objectives while also providing the necessary strength required.



New Farm Riverwalk. Picture courtesy of Cedinox Magazine





## Christina and John Markey Memorial Pedestrian Bridge



Christina and John Markey Memorial Pedestrian Bridge. Picture courtesy of Rosales + Partners.

© Rosales + Partners

Location:	Revere in MASS, USA
Crosses:	roadway
Type:	cable-stayed bridge for pedestrians
Opened in:	2013
Materials:	stainless steel
Stainless steel products:	balustrade and railing cables
Architects:	Rosales + Partners, Boston, Mass.
Photographs:	courtesy of Rosales + Partners

## History

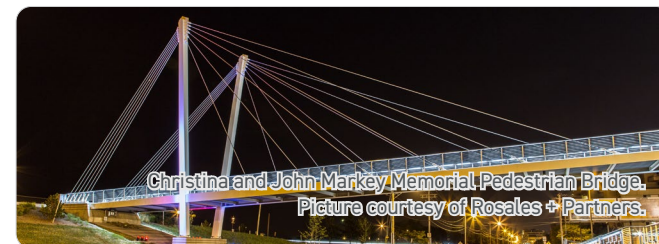
The Markey bridge is the first cable-stayed pedestrian-only bridge in the state and gives pedestrians access from a busy plaza to the beach. As they walk across the 46 m long bridge pedestrians are treated to a magnificent view of the Atlantic Ocean. It's a bridge worth crossing. The Christina and John Markey pedestrian bridge at Revere in Massachusetts is a memorial to, and was funded by,

John Markey and his wife, parents of Edward Markey, a US Senator.

Since the bridge was opened in 2013, pedestrian traffic to the beach has increased significantly and there are plans to open a hotel there in the near future. The Markey bridge is a stunning and iconic landmark in the area and is a source of pride to the surrounding community.



Christina and John Markey Memorial Pedestrian Bridge. Picture courtesy of Rosales + Partners.



Christina and John Markey Memorial Pedestrian Bridge.  
Picture courtesy of Rosales + Partners.

## Why stainless steel?

The successful completion of this bridge was a result of close collaboration between all companies involved including Ronstan Tensile Architecture who supplied many of the materials, notably the stainless steel components which make the appearance of the bridge so appealing. All the stainless steel components, including the balustrade and railing cables, and the galvanised stays, are of high quality construction in order to weather the climate and the marine conditions of the area. The stays have a galvanised coating to protect them from any possible pollutants from the nearby industry. The 16 m high towers incline outwards with the stainless steel pedestrian railings also inclining to match, all these stainless steel components are tapered and set at an angle giving different visual experiences depending on the vantage point. To further enhance the aesthetics of this unique bridge, integrated lighting has been incorporated into the stainless steel balustrade making it a beautiful and colourful sight when viewed at night from the beach or the sea.



## Helix Bridge



Helix Bridge. Picture courtesy of Outokumpu and Photographer Andrea Goh

Location:	Singapore
Crosses:	Marina Bay
Type:	Bridge for pedestrians
Opened in:	2010
Materials:	Forta DX 2205 (plate and tubular), Outokumpu
Stainless steel products:	all stainless steel bridge
Architects:	Cox Group and Architects 61
Photographs:	Courtesy of Outokumpu and Photographer Andrea Goh
More information:	<a href="http://outokumpu.com">outokumpu.com</a>

## Why stainless steel?

The source of inspiration for the structure was the DNA molecule. It provided a deceptively lightweight solution to a bridge that curves in plan and is tubular in section, this geometry being devised to integrate structure, deck and canopy within its overall 10.8 metre diameter. The economy of material facilitated by the DNA-based structure prompted the Singapore Urban Development Authority to have the bridge fabricated in duplex stainless steel. Duplex stainless steel grade Forta DX 2205 was used to create a structure with improved mechanical properties compared to austenitic steels. It also met the corrosion resistance requirements easily, reducing the possibility of stress corrosion cracking, while also providing high fatigue strength.

For the Helix Bridge, the high strength of duplex stainless steel led to material savings that meant the cost of the material was equivalent to using carbon steel. Moreover, over the 100-year design life of the structure, analysis showed that stainless steel will provide a lower cost option than using carbon steel due to savings in maintenance and regular inspections and repainting. Stainless steels are naturally resistant to corrosion and do not require extensive maintenance.

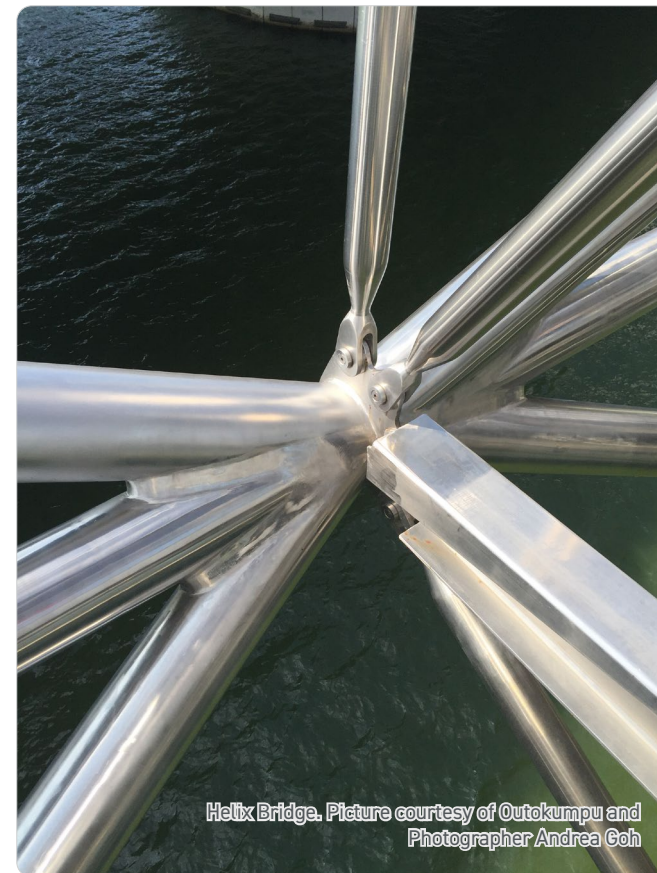


Helix Bridge. Picture courtesy of Outokumpu and Photographer Andrea Goh

## History

The Helix Pedestrian Bridge spans the mouth of the Singapore River where it opens onto Marina Bay. It links the established Raffles Avenue district with the new Bay precinct that contains the Sands Resort and the Gardens By The Bay, and leads around to the CBD Financial District.

The project encompassed both the pedestrian bridge and a new vehicular bridge, the latter running straight across the river mouth. The pedestrian bridge is curved in plan to distance pedestrians from the traffic while also enabling pedestrians to connect from one bridge to the other at mid-span. The bridge is 285 metres long, made up of three 65 metre spans and two 45 metre end spans.



Helix Bridge. Picture courtesy of Outokumpu and Photographer Andrea Goh





## Golden Bridge



Golden Bridge. Picture courtesy of TA Corporation.

Location:	Da Nang, Vietnam
Crosses:	Ba Na Hills
Type:	girder bridge for pedestrians
Opened in:	2018
Materials:	stainless steel
Stainless Steel products:	handrails
Architects:	TA Corporation
Photographs:	Courtesy of TA Corporation
More information:	<a href="http://tiongaik.com.sg">tiongaik.com.sg</a>





Golden Bridge. Picture courtesy of TA Corporation.



Golden Bridge. Picture courtesy of TA Corporation.

## History

The Golden Bridge is a 150-meter-long pedestrian bridge in the Bà Nà Hills resort, near Da Nang, Vietnam. It is a walkway between two cable-car stations within the mountain-top resort. The bridge was designed by TA Landscape Architecture based in Ho Chi Minh City. The bridge opened in June 2018.

## Why stainless steel?

The curved bridge held up by two giant hands has a timber deck with stainless steel golden coloured handrails.



Golden Bridge. Picture courtesy of TA Corporation.



## Sasashima Komeno Bridge



Sasashima Komeno Bridge. Picture courtesy of JSSA.

### History

During the course of a land re-adjustment project

in Nagoya City, a footbridge was built to connect areas of the City which had been divided into smaller sections with limited rail links.

Location: Nagoya, Japan  
Crosses: railway  
Type: girder bridge for pedestrians  
Opened in: 2011  
Materials: SUS 329J4L and SUS 304,  
Nippon Yakin Kogyo Co., Ltd.  
stainless steel products: decorative panels  
Fabricator: Rintatsu Co., Ltd.  
Photographs: Courtesy of JSSA  
More information: [jssa.gr.jp](http://jssa.gr.jp)

### Why stainless steel?

The location of the footbridge (above the railways) makes regular maintenance difficult and the overall length of 156 meters made it necessary to optimise the weight of the structure. With these factors to be considered, SUS329J4L, a duplex stainless steel which has high strength properties and is particularly corrosion-resistant, was adopted for decorative panels inside and outside the girders.



## Terrace Bridge



Terrace Bridge. Picture courtesy of NIPPON STEEL Stainless Steel Corporation.

Location:	Tokyo, Japan
Crosses:	Sumida River
Type:	girder bridge for pedestrians
Opened in:	2018
Materials:	SUS 323L plate, NIPPON STEEL Stainless Steel Corporation
Stainless steel products:	structure
Photographs:	Courtesy of NIPPON STEEL Stainless Steel Corporation
More information:	<a href="https://stainless.nipponsteel.com">stainless.nipponsteel.com</a>



## History

The Tokyo Metropolitan Government maintains the riverbed of the Sumida River as a promenade, "The Sumida River Terrace". Tokyo is trying to create an attractive riverside space, including continuation of the Sumida River Terrace, which is often divided by waterways, with pedestrian bridges. This time, a pedestrian bridge at Kiyosumi was replaced. It opened in March 2018.

### Why stainless steel?

The bridge was originally made of carbon steel. However, there is low clearance under the bridge beam and it is difficult to repaint. This time, a maintenance-free and high-performance duplex stainless steel SUS323L was adopted for the main part of this bridge. It is the first stainless steel road bridge in Japan. 50 tons of SUS323L were used.



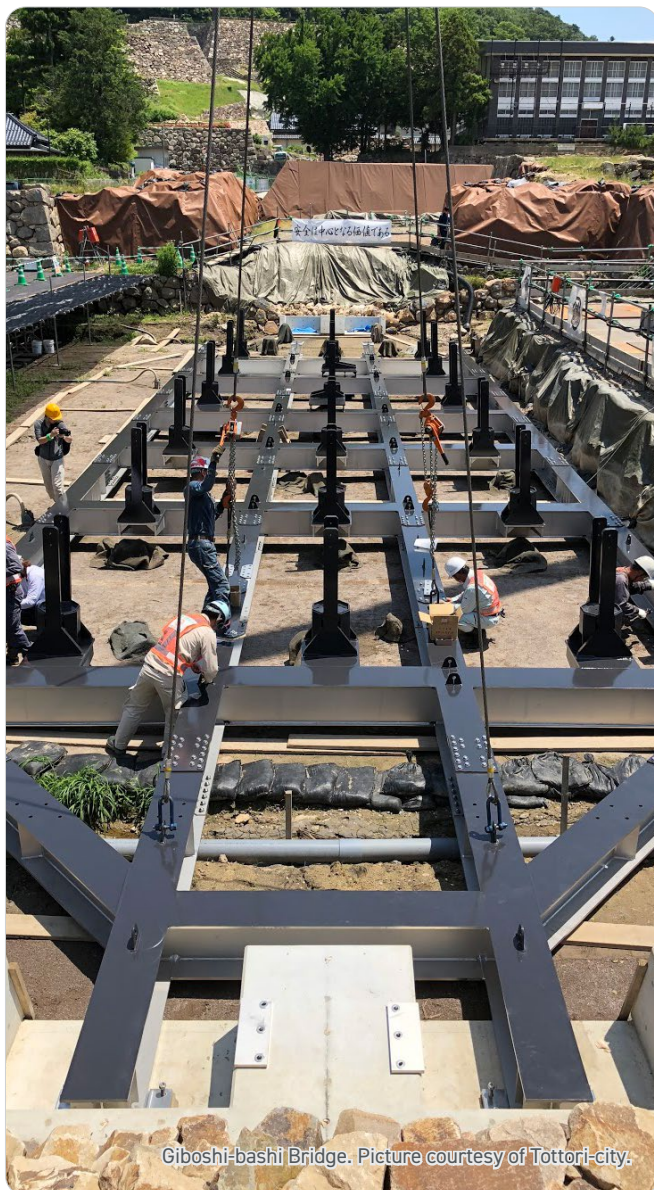
Terrace Bridge. Picture courtesy of NIPPON STEEL Stainless Steel Corporation.

## Giboshi-bashi Bridge



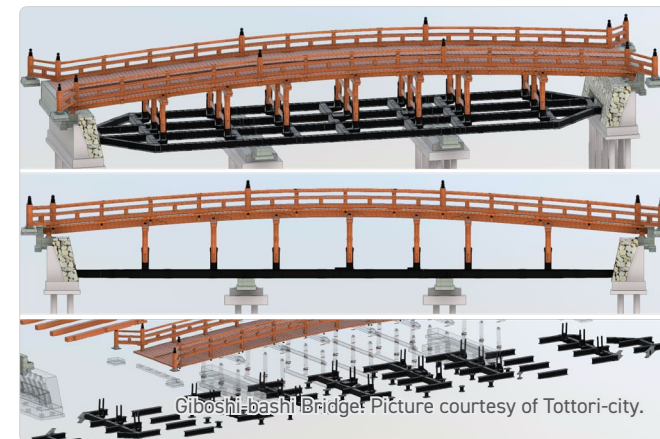
Location:	Tottori-city, Japan
Crosses:	moat
Type:	bridge for pedestrians
Opened in:	2018
Materials:	NSSC2120 (SUS821L1) plate and long, NIPPON STEEL Stainless Steel Corporation
Stainless steel products:	structure
Design & Engineering:	Japan Cultural Heritage Consultancy NIPPON ENGINEERING CONSULTANTS CO., LTD. Kanabako Structural Engineers
Constructor:	TODA Corporation
Fabricator:	Narasaki Seisakusyo Co., Ltd.
Photographs:	Courtesy of Tottori-city, Japan





## History

Tottori City is restoring the approach to the main entrance of the Tottori-jo Castle, in the Edo period. Giboshi-bashi Bridge was founded in 1621, and the last work was done in 1868, 151 years ago. Today's reconstruction is a restoration of the wooden Giboshi-bashi Bridge over the outer moat of the Tottori-jo Castle ruins. In order to preserve the remains of the bridge piers at the bottom of the moat and faithfully reproduce the Giboshi-bashi Bridge based on the ancient documents, a new construction method was adopted in which a beam was constructed under the water and the wooden bridge was placed on this. The Giboshi-bashi Bridge was completed in October 2018, and the restoration work on the entire Tottori-jo Castle Ruins is continuing.



## Why stainless steel?

As a material possessing the sufficient durability and strength to make this construction method possible, duplex stainless steel NSSTS 2120 developed by NIPPON STEEL Stainless Steel Corporation has been adopted for the entire steel structure from structural members to nuts and bolts. This is the first case that NSSTS 2120 nut and bolts have been adopted for public works. The bridge is 6 meters wide and 36 meters long. NSSTS 2120 used approximately 50 tons of plates and bars.



## Padre Arrupe Footbridge



Padre Arrupe Footbridge. Picture courtesy of Outokumpu and Photographer Havas Worldwide Helsinki

Location:	Bilbao, Spain
Crosses:	Nervión River
Type:	Girder bridge for pedestrians
Opened in:	2003
Materials:	Forta DX 2304 Duplex stainless steel plate 480 tons, Outokumpu
Stainless steel products:	segments
Architects:	Estudio Gadiana
Photographs:	Courtesy of Outokumpu and Photographer Havas Worldwide Helsinki
More information:	<a href="http://outokumpu.com">outokumpu.com</a>



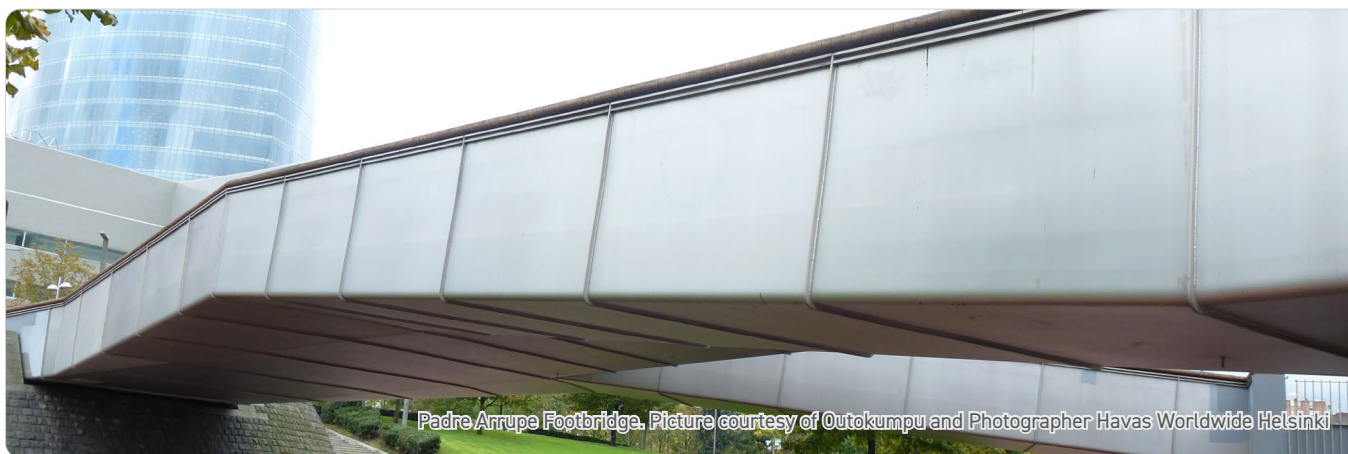
## History

Named after a Jesuit priest from Bilbao, the Padre Arrupe footbridge is a vital point of connection between the Guggenheim Museum and the University of Deusto. Designed by engineer José Antonio Fernández Ordóñez and finished by his son, Lorenzo, it was vital for this walkway to complement the pre-existing architecture nearby. But it also had to be safe, strong and able to withstand environmental corrosion.

Finished with a covering of Lapacho wood to prevent slipping, the Pasarela Padre Arrupe was the first stainless steel footbridge in Spain. It has now become a key part of the local landscape, gaining the nickname 'The Dragonfly' due to its striking appearance.

### Why stainless steel?

Forta DX 2304 duplex stainless steel is notable for its durability, aesthetics and strength. This makes it perfect for footbridges, which undergo heavy use from pedestrians and cyclists every day. But it also resists corrosion and cracking, ensuring protection from environmental damage over a long life. And with the special plate surface finish used in this project, Forta DX 2304 delivers enduring beauty alongside exceptional performance and minimal maintenance demands.





## Celtic Gateway Bridge



Celtic Gateway Bridge. Picture courtesy of Outokumpu

Location:	Wales, United Kingdom
Crosses:	Old Holyhead Harbour
Type:	Arch bridge for pedestrians
Opened in:	2006
Materials:	Forta DX 2304 Duplex stainless steel 220 tons, Supra 316L/4404, Outokumpu
Stainless steel products:	Arches, handrails
Architects:	Gifford and Partners
Photographs:	Courtesy of Outokumpu
More information:	<a href="http://outokumpu.com">outokumpu.com</a>



## History

The Celtic Gateway Bridge in Holyhead, UK, is a pedestrian and cycle link between the town's railway station and harbor. 2.4 million passengers pass through the port of Holyhead in a year into the town. Although the ferry terminal and the railway station are only about 250 metres, access between the two was difficult until the construction of the Celtic Gateway. The Gateway Bridge made easier to access between the port and the town centre.



## Why stainless steel?

Being a bridge that crosses an ocean harbor, the conventional approach would be to specify stainless steel to Corrosion Resistance Class (CRC) IV under the EN 1993-1-4 standard for steel structures. Forta DX2205 is normally recommended for CRC IV. However, the harbour is well-sheltered with little risk of splashing from waves or high speed boat traffic and can be classified as being a coastal location that is 800-900 meters from the harbour mouth. Consequently, the bridge can be interpreted as requiring CRC III – a rating that is also consistent with the ability to resist the corrosive effects of de-icing salts over the winter months. Forta LDX2101 or Forta DX2304 stainless steels are recommended for CRC III so this bridge is constructed of Forta DX2304 with a smooth surface finish ( $R_a=0.4-0.5 \mu\text{m}$ ), with hand rail components being manufactured from Supra316L/4404.

An inspection of the bridge took place in 2015 and found it in generally good condition after 12 years' service.



## TRUMPF Bridge



TRUMPF Bridge. Picture courtesy of Andreas Schnubel

Location:	Ditzingen, Germany
Crosses:	Gerlinger Strasse (roadway)
Type:	shell bridge for pedestrians
Opened in:	2018
Materials:	Forta DX2205 plate, Outokumpu
Stainless steel products:	all stainless steel bridge
Architects:	Schlaich Bergermann & Partner
Photographs:	courtesy of Andreas Schnubel
More information:	<a href="http://outokumpu.com">outokumpu.com</a>



## History

The new footbridge over Gerlinger Strasse connects two production areas of the headquarters of TRUMPF in Ditzingen and enables employees to cross the busy regional road safely. The bridge is a lightweight shell construction, which due to the high efficiency of the supporting structure is made of only 2 cm thin, double curved stainless steel sheets. The shell edge is reinforced by upstands which twist towards the four base points to form triangular bearing points. Further bracing in the shell surface were completely omitted. Pedestrians walk directly on the steel shell, which is coated on the walking area to prevent slipping. Holes corresponding to the flow of force were cut into the shell with TRUMPF laser machines. The size and density of the apertures depend on the degree of utilisation of the supporting structure. In the area of the walking surface, the apertures are replaced by approximately 14,300 smaller holes filled with glass plugs. The bridge was welded together on site from several individual parts and lifted into its final position by a heavy-duty crane. The lightness of the bridge is underlined by the very transparent and anti-reflective allglass railings. Barkow Leibinger (Berlin) supported Architect Schlaich Bergermann & Partner with architectural consultancy.



### Why stainless steel?

Duplex stainless steel was selected for its corrosion-resistant properties, as the roadway below saw a lot of traffic and it needed to stand up to the road salts and icy conditions in winter.



## Bascule Pedestrian Bridge



Bascule Pedestrian Bridge. Picture copyrighted by PCCP Architectes

Location:	Lyon, France
Crosses:	At the confluence of the rivers Rhône and Saône
Type:	bridge for pedestrians
Opened in:	2009
Materials:	2205 / EN 1.4462 (Uranus 45), Industeel
Stainless steel products:	structural parts
Architects:	Patricia Colinet, PCCP, Paris
Photographs:	© PCCP Architectes
More information:	<a href="http://industeel.arcelormittal.com">industeel.arcelormittal.com</a>



## History

At the confluence of the rivers Rhône and Saône in Lyon, a new quarter has grown around a new iconic museum. As part of the upgraded environment, a pedestrian bridge leads over a former dock which is now devoted to leisure activities. The structure was designed as a bascule bridge to allow also larger ships to enter the dock.

### Why stainless steel?

The architects suggested a filigree shape, which should be outlined during the night by LED lighting. The aesthetic ambitions made weight saving essential and led to the selection of duplex stainless steel. Its high mechanical strength made it possible to reduce wall thickness by about 30% compared with carbon steel. The material ensures a long and virtually maintenance free service life. Making applied corrosion protection redundant, duplex stainless steel also contributes to the high sustainability profile of the bridge.



Bascule Pedestrian Bridge. Picture copyrighted by PCCP Architectes



## Footbridge for skiers



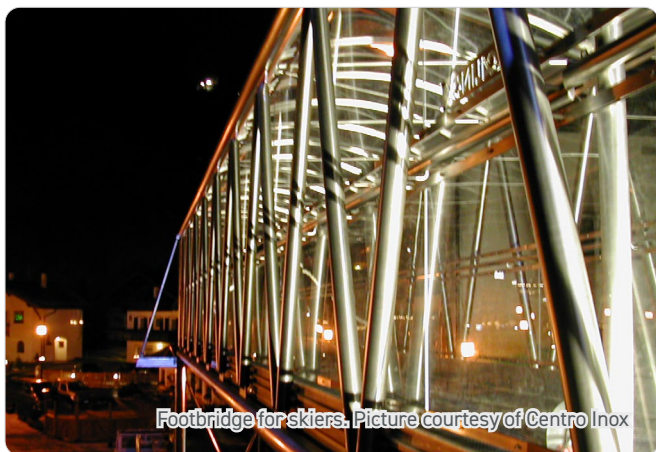
Footbridge for skiers. Picture courtesy of Centro Inox

Location:	Selva Di Val Gardena, Italy
Crosses:	roadway
Type:	girder bridge for pedestrians
Opened in:	2003
Materials:	AISI 304L (EN 1.4307)
Stainless steel products:	stairs and walkway
Architects:	Dr. Ing. Flavio Mussner
Photographs:	From Inossidabile - Courtesy of Centro Inox
More information:	<a href="http://centroinox.it">centroinox.it</a>



## History

A footbridge permitting skiers (about 8,000 people/day in the winter season) to reach the chairlift without crossing the main road has been installed in Selva di Val Gardena (Bolzano).



Footbridge for skiers. Picture courtesy of Centro Inox

## Why stainless steel?

To reduce environmental impact, they chose a light and transparent structure using stainless steel and polycarbonate panels.

To access the skiers' footbridge, they installed a stainless steel, helicoidal **staircase** of 2.20 m wide, covered in polycarbonate, formed by a Neville type spatial, reticular structure.

Above the main road the **footbridge** is in stainless steel, about 2.20 m wide, about 17.50 m long and about 2.60 m high, also covered in a reticulated structure.

The entire walkway is in AISI 304L (EN 1.4307) stainless steel. The tubes were welded in TIG with Scotch Brite surface finishing. The welded joints were also done in TIG, with pure Argon gas protection and EN 19 12 3 Si (AISI ER 316 LSi) weld material.

The weight of the finished walkway and the staircase is approx. 11 tons.



Footbridge for skiers. Picture courtesy of Centro Inox



## Pedestrian Bridge in Ortisei



Pedestrian Bridge in Ortisei. Picture courtesy of Centro Inox.

Location:	Val Gardena, Italy
Crosses:	River
Type:	Bridge for pedestrians
Opened in:	2005
Materials:	EN 1.4301 (AISI 304) plate, EN 1.4401 (AISI 316) wire
Stainless Steel products:	Uprights of the parapet, wire rope of railings, handrail
Architects:	Arch. Lukas Burgauner
Photographs:	From Inossidabile - Courtesy of Centro Inox
More information:	<a href="http://centroinox.it">centroinox.it</a>



## History

In the town of Ortisei, in Val Gardena, a pedestrian bridge, opened in January 2005, connects the zone where the Hotel Cavallino Bianco is located with the cable car station for the Alpe di Siusi. It is a single structure, 65 m high, with steel cables and a 3 metres wide metallic deck.

It is supported by 8 Y shaped elements, of variable dimensions, and with a welded double T profiles. The loadbearing inferior cables are composed of two

80 mm diameter tension rods, constructed with hot galvanized high-tensile steel wires. The stabilizing lateral cables are also composed of two 80 mm diameter tension rods.



## Why stainless steel?

- the uprights of the parapet, 15 mm thick, interaxis 1,750 mm, made of satin finished EN 1.4301 (AISI 304) steel;
- the infill cables of the parapet, formed with spiral cables, 6 mm in diameter, made of EN 1.4401 (AISI 316) steel, interaxis 100 mm, equipped with turnbuckles at both extremities;
- the handrail made of satin finished EN 1.4301 (AISI 304) steel, with an oval section of about 160x80 mm, with the lighting system incorporated;
- the lateral protections wire mesh, with an 80 mm mesh, 2 mm diameter wires, completed with various accessories;
- the inferior lining of the deck made of stretch flattened EN 1.4301 (AISI 304) steel sheet.





## Pedestrian Bridge in Scheggino



Pedestrian Bridge in Scheggino. Picture courtesy of Centro Inox.

Location:	Valnerina, Italy
Crosses:	River Nara
Type:	Bridge for pedestrians
Materials:	EN 1.4301 (AISI 304), ThyssenKrupp Acciai Speciali Terni SpA
Stainless Steel products:	Whole structure
Architects:	Arch. Alessandro Balucani
Photographs:	From Inossidabile - Courtesy of Centro Inox
More information:	<a href="http://centroinox.it">centroinox.it</a>



## History

Situated in the south-east part of Umbria, Scheggino is a small town of the Valnerina, which spreads out in the valley along the banks of the river Nera. A pedestrian bridge connects the old town centre with the new car park situated close to the torrent Valcasana, in order to relieve from car traffic congestion the historic part of the town. The bridge covers a distance of 14.39 m, including the two vertical posts supporting the steel cables, while the bridge scaffolding is 1.60 m wide.

### Why stainless steel?

All elements most subject to wear and tear have been made of EN 1.4301 (AISI 304) stainless steel. Therefore, the higher costs for this structure born at the beginning will allow considerably reducing maintenance costs. The whole structure has been made of stainless steel, as this material ensures high structural performances and resists to corrosion. The visual impact of this bridge is minimal, since it does neither show any relevant section in terms of visible mass, nor require anti-corrosion protective coatings and invasive treatments to be periodically repeated. This is an essential characteristic for a pedestrian bridge situated in a natural environment that has to be preserved.



Pedestrian Bridge in Scheggino. Picture courtesy of Centro Inox.



## Bridge across the E4 in Södertälje



Bridge across the E4 in Södertälje. Picture courtesy of Stål & Rörmontage.

Location:	Södertälje, Sweden
Crosses:	Road
Type:	Girder Bridge for pedestrians
Opened in:	2018
Materials:	Forta LDX 2101 plate, Outokumpu
Stainless Steel products:	The whole bridge
Fabricator:	Stål & Rörmontage
Photographs:	Courtesy of Stål & Rörmontage
More information:	<a href="http://outokumpu.com">outokumpu.com</a>





## History

A diverse, multicultural city located 30 km outside of Stockholm, Södertälje is an important economic center for Sweden as a whole. But with a growing population comes increasing vehicle and foot traffic. When it identified that the existing wooden pedestrian and cycle bridge had come to the end of its life after only 20 years, the Municipality of Södertälje identified an urgent need for a longlasting

stainless steel replacement.

The Södertälje Bridge was completed in 2018 after being pre-fabricated and delivered to site in sections for speedy installation to minimize the duration of road closures. It's now helping pedestrians and

cyclists cross this busy road with maximum ease, safety, and accessibility – and Stål & Rörmontage has estimated that the duplex stainless steel bridge will cost a fraction of a wood or carbon steel alternative over its design life.

## Why stainless steel?

The municipality of Södertälje commissioned fabricator Stål & Rörmontage to design it. The firm developed a design based on its own patented approach, which created an attractive bridge with a low lifetime cost. But the design created clear requirements for stainless steel.

Using high-strength duplex stainless steel Forta LDX 2101 duplex stainless allowed the designers to reduce the size and weight of the structure, which saves on costs of materials as well as transport and installation. In addition, the corrosion-resistant material is designed for a lifespan of around 100 years – while minimizing future maintenance costs, as no painting or hazardous coatings are needed.



Bridge across the E4 in Södertälje. Picture courtesy of Stål & Rörmontage.



## Sölvesborg Footbridge



Sölvesborg Bridge. Picture courtesy of Outokumpu.

Location:	Sölvesborg, Sweden
Crosses:	Sölvesborg Bay
Type:	arch bridge for pedestrians
Opened in:	2013
Materials:	Forta LDX 2101 plate, Outokumpu
Stainless steel products: the whole supporting structure	
Architects:	Ronny Södergren, Sölvesborg
Fabricator:	Stål & Rörmontage
Photographs:	Courtesy of Outokumpu
More information:	<a href="http://outokumpu.com">outokumpu.com</a>



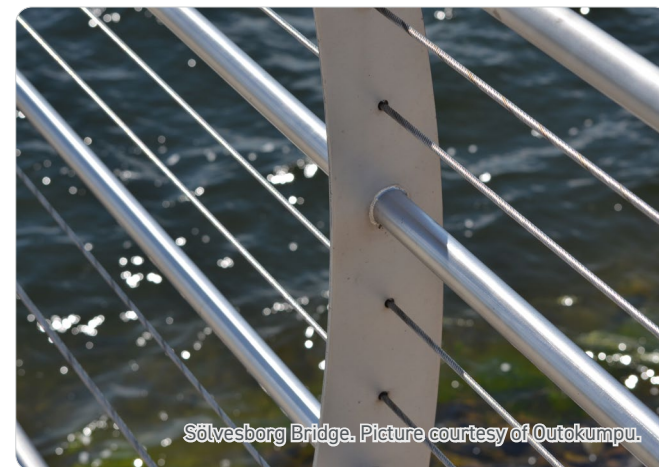
## History

The city of Sölvesborg in Sweden had been seeking to build a bridge to the Listerlandet peninsula since 1947. But it was only in 2012 that they were ready to begin building a design created by architect Ronny Södergren with support from construction company Stål & Rörmontage. The bridge enables residents in nearby Listerlandet to cycle or walk to the city centre in just a few minutes. As Europe's longest pedestrian bridge, it was also a design that would put Sölvesborg on the architectural map. And one that required a lot of steel.

The design features three 60-metre steel bridge arches as well as a long wooden deck with steel supports and railings, taking the total bridge length to 756 metres. The arches support the main platform so needed to be strong and durable. In addition, the bridge site is next to a bird sanctuary so the materials also had to be environmentally friendly. It provides a connection between urban and rural landscapes, with benches placed on the bridge so those crossing can stop, sit and enjoy the view over the bay and city. This effect is enhanced at night by a lighting system that changes colour with the seasons, allowing the bridge to blend in with its surroundings. This remarkable structure has now become a landmark. In March 2016, the Swedish national postal service PostNord even released a postage stamp featuring the Sölvesborg bridge.

## Why stainless steel?

Unlike carbon steel, Duplex stainless steel LDX210 doesn't require surface treatment or painting and only needs minimal maintenance. As well as protecting the environment, this reduces the overall life-cycle costs of a structure. Stainless steel is also fully recyclable, which will further increase the bridge's sustainability when it eventually reaches the end of its life. With the supporting structure made using 150 tons of LDX210, the bridge finally opened in 2013.



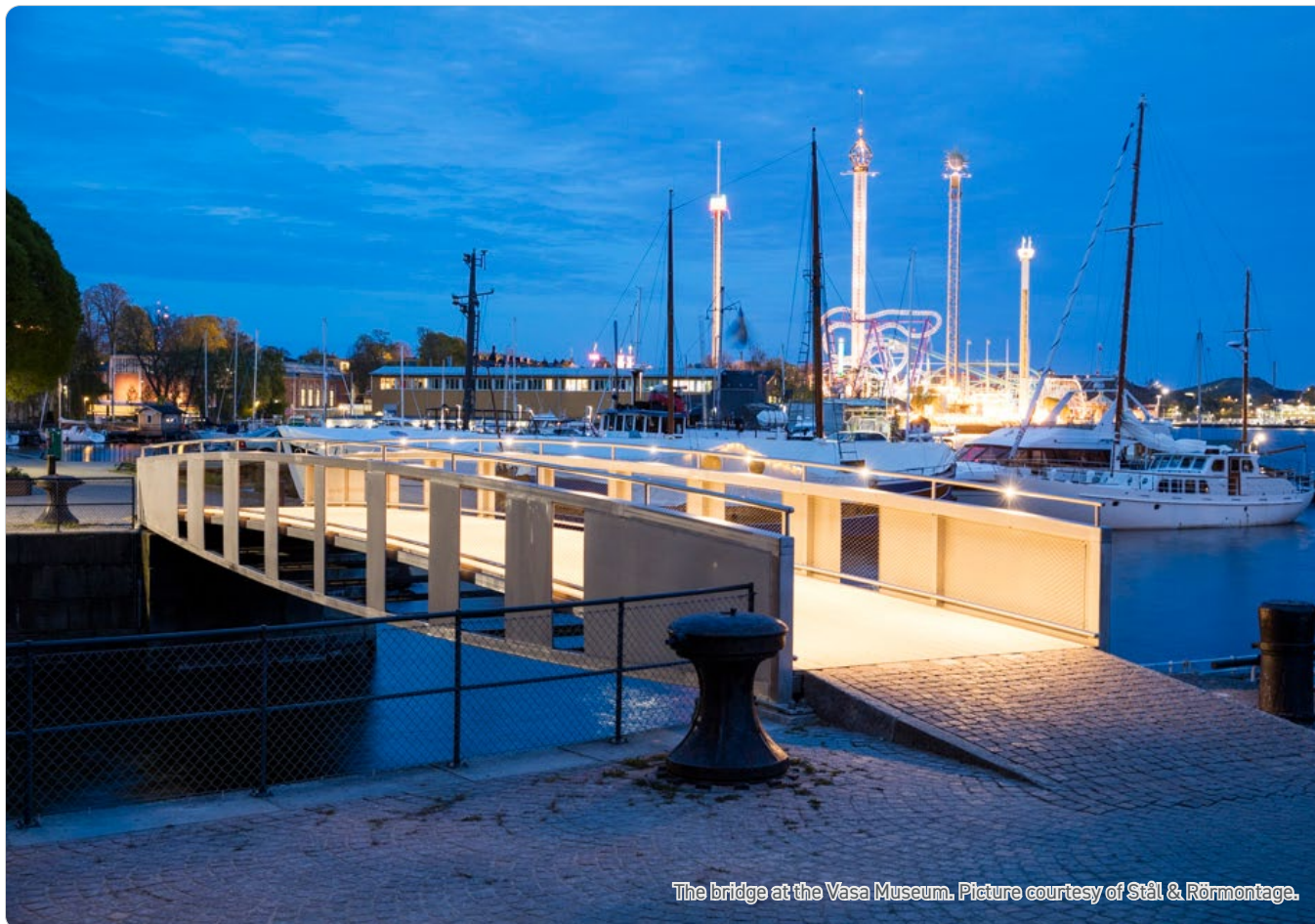
Sölvesborg Bridge. Picture courtesy of Outokumpu.



Sölvesborg Bridge. Picture courtesy of Outokumpu.



## The bridge at the Vasa Museum



The bridge at the Vasa Museum. Picture courtesy of Stål & Rörmontage.

Location:	Stockholm, Sweden
Crosses:	river
Type:	bridge for pedestrians
Opened in:	2017
Materials:	duplex stainless steel
Fabricator:	Stål & Rörmontage
Photographs:	Courtesy of Stål & Rörmontage
More information:	<a href="http://outokumpu.com">outokumpu.com</a>



## History

On behalf of the Royal Djurgård Administration, Stål & Rörmontage constructed, manufactured and installed a 20 meter long and 3.5 meter wide walkway and bicycle bridge which opened a new, requested walkway along the Djurgårds quay outside the Vasa museum in Stockholm. The bridge opened in February, 2017.

### Why stainless steel?

The bridge weighs about 7 tons and is built in stainless steel duplex steel. With LCC in focus, this is a particularly suitable material for bridges that otherwise suffer from expensive maintenance work.



The bridge at the Vasa Museum. Picture courtesy of Stål & Rörmontage.

## Likholefossen Bridge



Likholefossen Bridge. Picture courtesy of Outokumpu.

Location:	Gaularfjellet Mountains, Norway
Crosses:	Gaulravssdraget River
Type:	bridge for pedestrians
Opened in:	2004
Materials:	Forta LDX 2101 plate, Outokumpu
Stainless steel products:	full stainless bridge
Photographs:	Courtesy of Outokumpu
More information:	<a href="http://outokumpu.com">outokumpu.com</a>



## History

The Likholefossen bridge was built by Norway's public roads administration across the scenic Gaulravssdraget river to complete a hiking track called the Waterfall Path from Nystølen to Eldal. The light, stainless steel bridge gives hikers the feeling of standing in the waterfall.

Fifteen years later, the bridge is still functional, attractive and has required little maintenance. In fact, it is often cited as a feature of the landscape and a highlight of the hike.

### Why stainless steel?

The bridge is completely inaccessible by road, which meant that the bridge had to be pre-assembled and flown in by helicopter ready for installation. In addition, the bridge needed to be durable – being constantly exposed to water from the river and waterfall, corrosion resistance was paramount. With that in mind, Forta LDX 2101-grade stainless steel was supplied as it is light, durable and corrosion resistant. The Likholefossen bridge was the first to be built with Forta LDX 2101 stainless steel.



Likholefossen Bridge. Picture courtesy of Outokumpu.



## Siena Footbridge



Siena Footbridge. Picture courtesy of Outokumpu.

Location:	Siena, Italy
Crosses:	roadway
Type:	bridge for pedestrians
Opened in:	2006
Materials:	Forta LDX 2101 plate, Outokumpu
Stainless steel products: all structural parts supporting the concrete deck	
Architects:	Seteco Ingegneria s. r. l
Photographs:	Courtesy of Outokumpu
More information:	<a href="http://outokumpu.com">outokumpu.com</a>



## History

Siena is one of the world's most-visited cities. A UNESCO World Heritage Site with a rich history, lively entertainment, and beautiful vistas, it's a place with a distinctive heritage – and an uncharacteristically large number of pedestrians.

When it planned to double the size of a busy highway separating the city center from the suburb of Ruffolo, the City of Siena commissioned a new pedestrian crossing from Seteco Ingegneria s.r.l. for the architectural and structural design. Today, the Siena footbridge provides better access for locals and tourists alike in the city. It's a relatively

new addition to a city with rich and ancient traditions, but it's one that's been largely embraced by the community. A visually arresting and convenient structure, the Siena Footbridge is as striking as it is useful – and will provide a long life with low maintenance.

## Why stainless steel?

The proposed bridge had substantial stainless steel requirements. The structure provided a 2 m wide footway over the motorway in a single 60 m long span, with a reinforced concrete deck slab supported on two 500 mm beams running the length of the bridge. Forta LDX 2101 duplex stainless steel was supplied for these beams as well as for two 12 meter high pylons that support them from either end of the bridge. Forta LDX 2101, designed to last 120 years – and supports all structural parts beneath the concrete deck of the 60 m bridge, offers good corrosion resistance for the benign inland environment. In addition, it offers the right combination of high strength, ductility, formability and weldability, with its high strength enabling Seteco Ingegneria to create a lightweight structure.



Siena Footbridge. Picture courtesy of Outokumpu.



Siena Footbridge. Picture courtesy of Outokumpu.



## Zumaia Footbridge



Location:	Zumaia, Spain
Crosses:	river
Type:	truss bridge for pedestrians
Opened in:	2008
Materials:	duplex stainless steel EN 1.4462, Outokumpu
Stainless steel products:	truss
Architects:	PEDELTA
Photographs:	Picture courtesy of PEDELTA
More information:	<a href="http://outokumpu.com">outokumpu.com</a>

Zumaia Footbridge. Picture courtesy of Outokumpu.





## History

The bridge, located in front of the sports arena, has improved the pedestrian flow between the two banks of the river. The municipality wanted to avoid

the use of automobile traffic in the area, improving the mobility of bicycles and pedestrians in the urban district. In this bridge's location, a town with a rich cultural memory and natural surroundings, a sensationalist, exhibitionist or superfluous

structure would not fit. The idea is to design a bridge that enhances the natural value of the river and understands its environment, instead of creating a useless or pointless landmark.



Zumaia Footbridge. Picture courtesy of Outokumpu.

## Why stainless steel?

Pedelta's proposal is a pure and sober structure, but with an innovating and challenging spirit. The bridge crosses a 28m long channel and has a 5m wide deck. The structural outline is clear and conceptually very simple: two Vierendeel trusses which function as a guardrail and where the lateral lighting and handrail is integrated. Pure simplicity. It is the first bridge structurally combining two high performance and corrosion-resistant materials: stainless steel and glass fiber reinforced polymers (GFRP).

Pedelta received the Civil engineering mention award (2nd Prize) in Construmat Exhibition for the Zumaia hybrid (Stainless steel and GFRP) footbridge (2009).



Zumaia Footbridge. Picture courtesy of Outokumpu.





## Sant Fruitos Pedestrian Bridge



Sant Fruitos Pedestrian Bridge. Picture courtesy of PEDELTA.

Location:	Sant Fruitós, Spain
Crosses:	Roadway N-141C
Type:	arch bridge for pedestrians
Opened in:	2009
Materials:	duplex stainless steel EN 1.4162, Outokumpu
Stainless steel products:	all load bearing structural elements
Architects:	PEDELTA
Photographs:	Picture courtesy of PEDELTA
More information:	<a href="http://outokumpu.com">outokumpu.com</a>





Sant Fruitos Pedestrian Bridge. Picture courtesy of PEDELTA.



Sant Fruitos Pedestrian Bridge. Picture courtesy of PEDELTA.



Sant Fruitos Pedestrian Bridge. Picture courtesy of PEDELTA.

## History

The district of Rosaleda, a new residential area in the town of Sant Fruitos that holds more than 6% of its population, was isolated from the commercial area of Casanova and the rest of the urban core by the state road N-141C. The crossing of this four lane road, which connects the town of Manresa with the town of Vic, has caused many accidents over the last few years. For this reason, the Municipality decided to completely eliminate this risk by building a signature pedestrian bridge.

## Why stainless steel?

The two main concepts proposed for this bridge are the use of a classical arch structure as the main element and the use of high-performance and structurally innovative materials Stainless Steel and GFRP (Glass Fiber Reinforced Polymer). The arch, with a span of 40m, is leaned to create a dynamic and tense feeling, and joins the deck for greater structural efficiency. The structure is conceived in a way that does not transmit the horizontal forces from the arch to the ground, avoiding expensive foundation systems. The arch is anchored directly to the deck on one side of the slab edge and through a strut element on the other.



## Pùnt da Suransuns



Punt da Suransuns. Picture courtesy of Martin Linsi, Wädenswil

### History

The Punt da Suransuns is a stress-ribbon bridge with a span of 40 meters carrying a footpath across the Hinterrhein river through the Viamala gorge.

Location:	Thusis, Grisons, Switzerland
Crosses:	Hinterrhein River
Type:	stress-ribbon bridge for pedestrians
Opened in:	1999
Materials:	EN 1.4462 (ribbons), EN 1.4435 (handrails)
Stainless steel products:	ribbons, handrails
Architects:	Conzett Bronzini Partner AG
Photographs:	Martin Linsi, Wädenswil

### Why stainless steel?

Spray laden with de-icing salt from a nearby main road posed a potential problem, so all the steel components of the bridge were made of highly alloyed stainless steel with good corrosion-resistance. The stress-ribbons are made of duplex stainless steel which also has excellent strength properties.



## 3D printed steel bridge



3D printed steel bridge. Picture courtesy of MX3D.

Location:	Amsterdam, Netherlands
Crosses:	river
Type:	3D Printed Bridge for pedestrians
Opened in:	2019 ?
Materials:	stainless steel, ArcelorMittal
Stainless steel products:	whole bridge
Architects:	Joris Laarman Lab
Technology:	MX3D
Photographs:	courtesy of MX3D





## History

Amsterdam based startup MX3D is 3D printing a fully functional stainless steel bridge to cross one of the oldest and most famous canals in the center of Amsterdam, the Oudezijds Achterburgwal.

Length: 12.2 meter

Width: 6.3 meter

Height: 2.1 meter

The MX3D bridge is going to be tested at the University of Twente. They will test the Bridge under a 17 ton load. Imperial College London has the lead for the testing which will take approximately one month. After that, the Bridge will stay for another two months at the University's Campus in Twente to install and test the smart sensor system under the bridge.



3D printed steel bridge. Picture courtesy of MX3D.



3D printed steel bridge. Picture courtesy of MX3D.



3D printed steel bridge. Picture courtesy of MX3D.



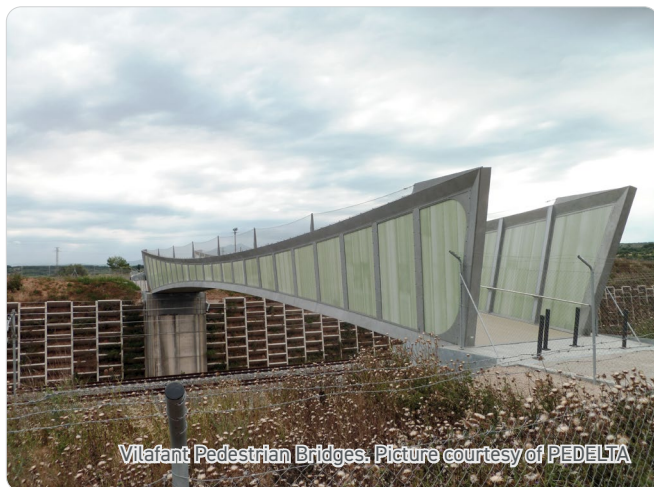


## Vilafant Pedestrian Bridges



Location:	Girona, Spain
Crosses:	railway
Type:	truss bridges for pedestrians
Opened in:	2011
Materials:	Duplex Stainless Steel EN 1.4162, Outokumpu
Stainless steel products:	truss
Architects:	PEDELTA
Photographs:	picture courtesy of PEDELTA

Vilafant Pedestrian Bridges. Picture courtesy of PEDELTA



## History

The high speed railway line connecting Barcelona and the French border crosses the Municipality of Vilafant 6 m below the ground level. To cross the sunken railroad, two pedestrian bridges have been planned. The structure, with one span of 46 m, is monolithically connected with the abutments. The use of unusual geometric shapes fabricated using stainless-steel and GFRP are blended in an innovative fashion, giving rise to an austere and elegant solution.



## Why stainless steel?

The two bridges have a main longitudinal span of 45.2 m and a deck width of 4 m. The structures are built-in on both abutments. The two bridges have a 4.3 m wide clear deck with a cross section consisting of two outwardly inclined hybrid trusses. An innovative structural hybrid truss has been designed. The combination of a stainless steel Vierendeel truss configuration with GFRP

panels between vertical members creates an efficient, continuous structural web.

The geometry of the truss follows the structural demands from the integral frame configuration, having a variable height between 3.4 m at the abutment and 1.2 m at mid-span. The deck is built using slim GFRP ribbed panel planks over the transverse floor beams.

Two different floor beams are alternated every 1.02 meters: I-GFRP 300x150x15 mm for lightness and

Stainless Steel rectangular 350x300 mm beams for rigidity. The GFRP panels between vertical elements in the Vierendeel trusses consist of a sandwich of two ribbed elements glued together for a total of an 80 mm thick translucent wall. The GFRP panels are continuously connected to both chords with stainless-steel bolts.





## Folke Bernadotte Bridge



Folke Bernadotte Bridge. Picture courtesy of Stål & Rörmontage AB.

Location:	Stockholm, Sweden
Crosses:	Djurgårdsbrunn Bay
Type:	bridge for pedestrians
Opened in:	2019
Materials:	Forta LDX 2101, Outokumpu
Stainless steel products:	structural
Fabricator:	Stål och Rörmontage
Photographs:	courtesy of Stål & Rörmontage
More information:	<a href="http://outokumpu.com">outokumpu.com</a>



Folke Bernadotte Bridge. Picture courtesy of Stål & Rörmontage.

## History

The new bridge adds qualities for the continued development of the walking city of Stockholm and increases accessibility for both pedestrians and cyclists. The stainless steel bridge links the museum park in northern Djurgården with Rosendal in southern Djurgården. The new bridge location gives Gärdet and the new Djurgårdsstaden a good connection to Djurgården and the Swedish capital's green oasis, the Royal National City Park. King Carl XVI Gustaf and Queen Silvia of Sweden opened the Folke Bernadotte Bridge on 17 September 2019 in Stockholm. The new bridge is named after the Red Cross leader, diplomat and mediator Count Folke Bernadotte af Wisborg (1895-1948).



Folke Bernadotte Bridge. Picture courtesy of Stål & Rörmontage.

## Why stainless steel?

The 98 meter long pedestrian and bicycle bridge is made of duplex steel and assembled by Stål och Rörmontage. The bridge parts were then transported to Stockholm for assembly. A steel bridge provides good opportunities for a high degree of prefabrication, a high degree of prefabrication minimizes the environmental

impact on site and provides many other advantages as a larger part of the production can take place in a controlled and safe environment. Duplex steel releases very low amounts of metal ions to the environment and bridges made of it do not require any environmentally hazardous coating. What is more, duplex steel is scrap-based and 100 % recyclable.





## Newcastle Memorial Walk



Newcastle Memorial Walk. Picture courtesy of Bryce Thomas and Simone de Peak.

Location:	Newcastle, Australia
Type:	bridge for pedestrians
Opened in:	2015
Materials:	316L, Atlas Steels
Stainless steel products:	section, frame, handrail
Designer:	EJE Architecture
Photographs:	Courtesy of Bryce Thomas and Simone de Peak
More information:	<a href="http://assda.asn.au">assda.asn.au</a>



## History

The much-anticipated Newcastle Memorial Walk opened on 24 April 2015 on the eve of the Anzac centenary, and features spectacular 360-degree views of Newcastle city and coastline. The 450 m raised walkway forms part of Newcastle City Council's 'Bathers Way Project', a \$29 million foreshore development and revitalisation program

to link Merewether Beach with Nobby Beach via a coastal walk.

In commemoration of the Anzacs the walkway features silhouettes of soldiers, laser cut from 10 mm thick weathering steel, specified to withstand the coastal wind load. These silhouettes are engraved with 3,860 family names of almost 11,000 known Hunter Valley men and women who served in the Australian Imperial Force, Royal Australian Navy,

Australian Army Nursing Service and British and Commonwealth forces during World War I from 1914-1918.

More than two million people visit Newcastle's beaches every year, and the Newcastle Memorial Walk is already one of Australia's most remarkable coastal walkways and a significant World War I tribute.

## Why stainless steel?

The walkway has a structural design life of 70 years, as required by Newcastle City Council. Grade 316L stainless steel was specified due to its sustainable, corrosion resistance and ductile properties. The cliff top location of the walkway overlooking the Pacific Ocean was also a determining factor given the high wind and salt exposure. 64 tonnes of stainless steel were supplied for the walkway, the bridge section frames and the handrails and balustrades.



Newcastle Memorial Walk. Picture courtesy of Bryce Thomas and Simone de Peak.

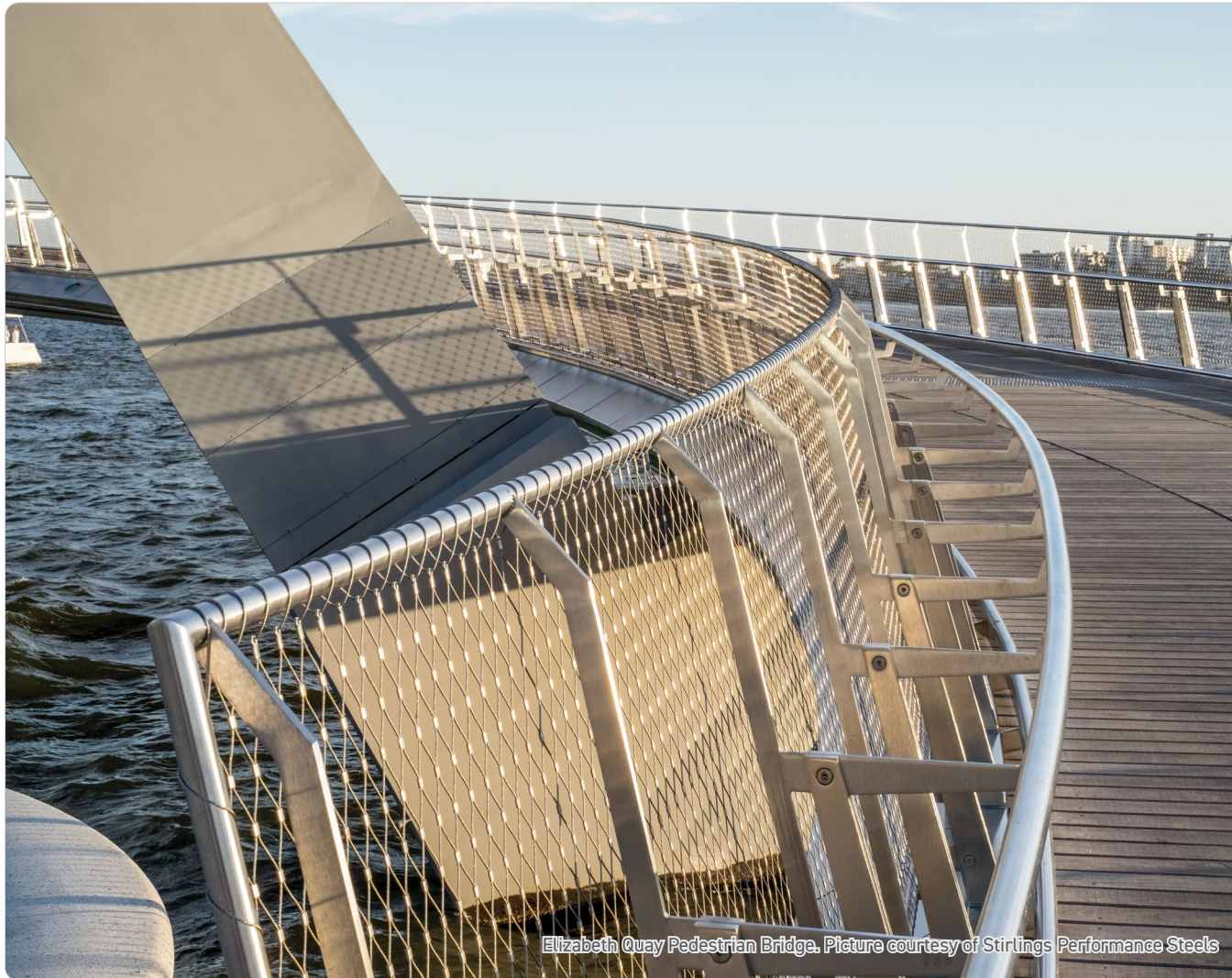


Newcastle Memorial Walk. Picture courtesy of Bryce Thomas and Simone de Peak.





## Elizabeth Quay Pedestrian Bridge



Elizabeth Quay Pedestrian Bridge. Picture courtesy of Stirlings Performance Steels

Location:	Perth, Australia
Crosses:	Swan River
Type:	cable-stayed Bridge for pedestrians
Opened in:	2016
Materials:	2304 Reval® reinforcement bar: Valbruna Australia 2205 and 316/316L plate, wire mesh panels, tube, pipe, channel, angle: Stirlings Australia laser cut and polished 2205, 316 and 316L plate: Vulcan Stainless
Stainless steel products:	rebar, handrails, balustrades, support posts, mesh barriers, kerbing, fascia panels and kick rail stations
Structural designer:	Arup
Fabricator:	Unifab Welding
Photographs:	Courtesy of Stirlings Performance Steels and Unifab Welding



Elizabeth Quay Pedestrian Bridge. Picture courtesy of Stirlings Performance Steels

## History

The Elizabeth Quay Pedestrian Bridge is a key feature of the Elizabeth Quay mixed-use development project core to revitalising Perth's CBD. Designed and engineered by Arup, the cable-stayed suspension bridge features a leaning double arch, is 22 m high, 5 m wide and is suspended over the inlet of the Swan River with a clearance of 5.2 m from the water. The 110 m long meandering pedestrian and cyclist bridge allows for continuous movement around the Quay, connecting the new promenades, an island and ferry terminal.

A key architectural feature of Elizabeth Quay, the pedestrian footbridge was opened to the public in January 2016. It exudes in quality, aesthetic appeal and durability with its extensive use of stainless steel, and is certain to provide the structural and material performance required to stand the test of time. Offering 360-degree views, the bridge is an exciting addition to Perth's CBD and provides increased opportunity for locals and tourists to interact with the Swan River and reinvigorated waterfront destination.

## Why stainless steel?

Installed exclusively in the splash zones of the concrete piers, stainless steel reinforcement was specified to resist corrosion attack and prevent concrete spalling. In addition, the overall mass of the concrete piers had to be minimised in order to support and achieve the sleek, sinuous design of the almost 200 tonne arches. Reduction in concrete mass decreases the overall protection of the installed reinforcement bar, resulting in stainless steel as the material of choice to achieve the slimmer river piers and meet the demands of the architectural design.



## Other types of bridges



## Tokyo Haneda International Airport



Tokyo Haneda International Airport. Picture courtesy of JSSA.

Location:	Tokyo, Japan
Crosses:	Tokyo Bay
Type:	runway
Opened in:	2010 (expansion)
Materials:	NAS354N (UNS N08354) for the upper part in the splash zone NSSTS270 / NAS185N (SUS312L, UNS S31254, EN 1.4547) for the lower part in the tidal zone NIPPON STEEL Stainless Steel Corporation/ Nippon Yakin Kogyo Co., Ltd.
Stainless steel products:	stainless steel-clad structural steel circular hollow sections
Fabricator:	Nippon Steel Engineering Co., Ltd and Joint Ventures
Photographs:	Courtesy of JSSA
More information:	<a href="http://jssa.gr.jp">jssa.gr.jp</a>





## History

When Tokyo Haneda International Airport was expanded, the scarcity of land made it necessary to build the new runway D out into the sea. The supporting structure of a connecting bridge to the artificial island is in direct contact with sea water.



## Why stainless steel?

Reconciling the 100 year durability requirement with Life Cycle Cost constraints was a challenge. Organic coatings would have required regular repair and caused unacceptable maintenance cost. In the case of titanium, by contrast, initial cost would have been prohibitive.

Technically and economically, the cladding of structural steel with high-end austenitic stainless steel turned out to be an optimal solution.

For the tidal zone, a 20% Cr, 18% Ni and 6% Mo grade with a PRE value of 43 was used. Contrary to common belief, the corrosion load is highest in the part which is not permanently wet. In such recessed areas, splash

water dries without rainwater washing the chloride-containing deposits away. For these conditions, a 23% Cr, 35% Ni and 7.5% Mo grade with a PRE value of 51 was found most appropriate.

The first-time application of this technique in an airport facility won the stainless steel producers the ISSF New Applications Award in May 2015.

## Takayo water pipe bridge



Takayo water pipe bridge. Picture courtesy of JSSA.

Location:	Hekinan City, Aichi Prefecture, Japan
Crosses:	river
Type:	truss-stiffening type bridge for water pipe
Opened in:	replacement
Materials:	SUS316
Stainless steel products:	pipe structures
Photographs:	courtesy of JSSA
More information:	<a href="http://jssa.gr.jp">jssa.gr.jp</a>

### History

When drinking water or sewage lines have to cross rivers and canals, they are often integrated into the girders of road and rail bridges or attached to them. In Hekinan, the steel water pipe of one such bridge had developed leaks and needed to be replaced. On this occasion, its capacity was increased to meet growing demand. However, the necessary larger pipe would have been impractical to integrate into the existing bridge. The municipal authorities therefore decided to erect a separate structure alongside the road bridge. The design was of the truss-stiffening type, in which the conduit has two functions: besides conveying the water, it also serves as the lower chord member of a truss.

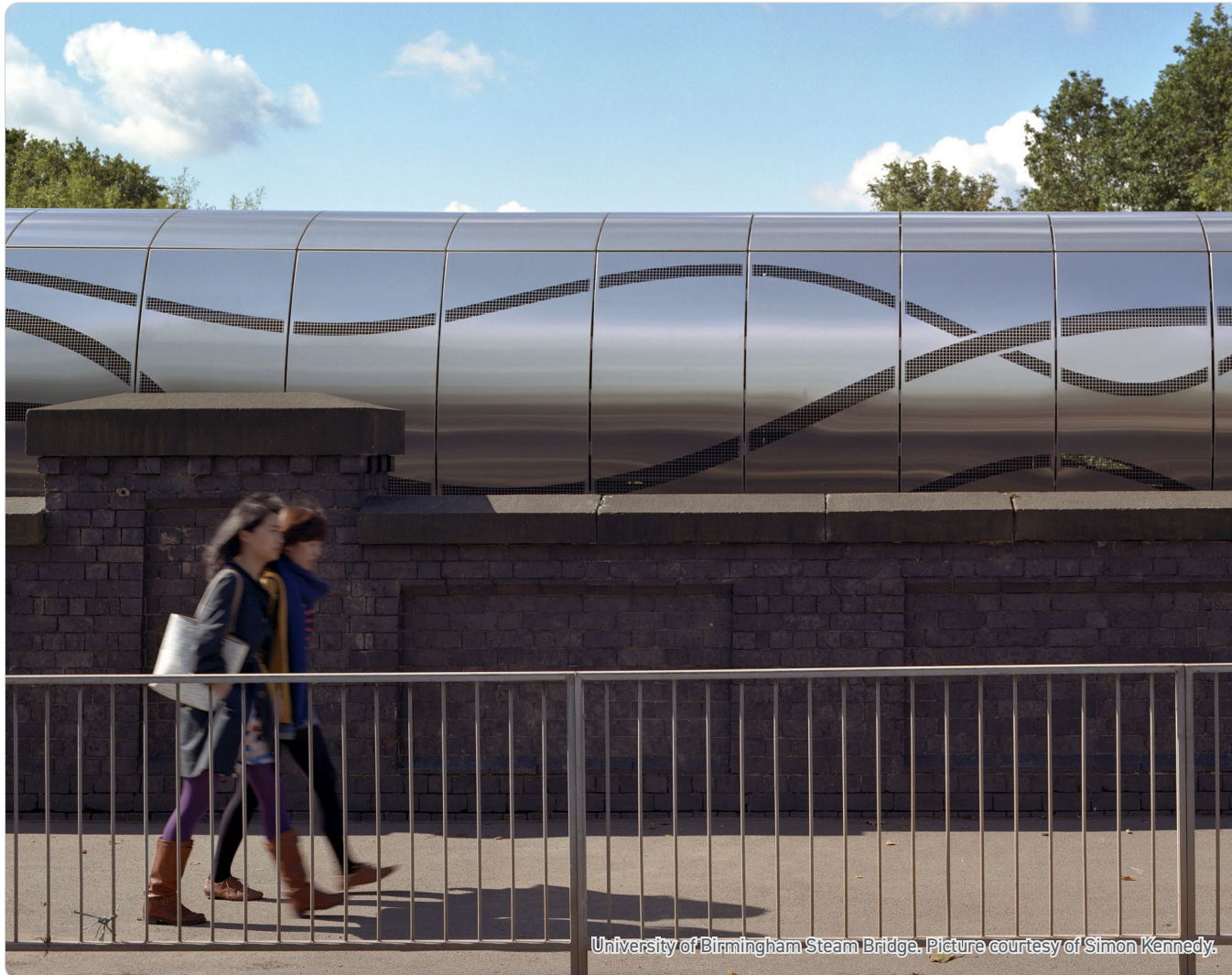
### Why stainless steel?

Molybdenum-alloyed grade SUS316 was used for three reasons. Firstly, this grade is known to be corrosion resistant in any usual drinking water composition. Water quality is unaffected. Secondly, under coastal atmospheric conditions the outer surfaces should be expected to be corrosion resistant. Repair coatings, which are typical of ageing steel or cast iron counterparts, become redundant. The stainless steel structure was found to be the most cost-effective option from a life cycle costing point of view. Finally, the exceptional ductility of austenitic stainless steels is an advantage in seismic conditions. Stainless steel is tougher than carbon steel or cast iron and can undergo stronger deformation without breaking. In the event of earthquakes, it is essential to maintain drinking water supply as a key element of public infrastructure. The requirement to defy both chloride-containing coastal atmosphere and earthquakes is quite typical of Japanese locations. Therefore, it is not surprising that about 40 % of all pipe bridges involve stainless steel in this country.





## University of Birmingham Steam Bridge



University of Birmingham Steam Bridge. Picture courtesy of Simon Kennedy.

Location:	Birmingham, UK
Crosses:	railway and canal
Type:	bridge for steam
Opened in:	2012
Materials:	316 2K vertical finish
Stainless steel products:	curved laser cut cladding panels
Architects:	MJP Architects
Fabricator:	Sorba BV
Photographs:	Simon Kennedy
More information:	<a href="http://mjparchitects.co.uk">mjparchitects.co.uk</a>





University of Birmingham Steam Bridge.  
Picture courtesy of Simon Kennedy.

## History

MJP were commissioned to design an architecturally elegant 60m bridge to carry services as part of the University of Birmingham's Combined Heat & Power network and sustainable energy strategy. The stainless steel Steam Bridge is a key component of a forwardlooking program.

## Why stainless steel?

After in-depth technical research into the cladding material and discussions with the British Stainless Steel Association about the appropriate specification of surface finish a curved 2k vertical finished, lasercut, Grade 316 stainless steel was chosen as the most practical and attractive solution. Because of the bridge's location over a busy railway and canal the durability of the steel surface was very important as the cladding has a 60 year design life with little or no opportunity for maintenance or cleaning. The surface characteristics of the selected finish needed to be effective in reducing the risk of build-up of atmospheric pollutants on a "dirty" site with aggressive ferrous brake dust and diesel exhaust.



University of Birmingham Steam Bridge.  
Picture courtesy of Simon Kennedy.





## Help

Help page

Contents page.

Previous page.

Next page.

Previous view.

## About ISSF

The International Stainless Steel Forum (ISSF) is a not-for-profit research and development organisation which was founded in 1996 and serves as the focal point for the global stainless steel industry.

### Vision

Sustain our future with stainless steels

### Membership of the ISSF

ISSF has two categories of membership namely:

- a. **company members** who are producers of stainless steels (integrated mills and re-rollers)
- b. **affiliated members** who are national or regional stainless steels industry associations.

The ISSF now has 57 members in 26 countries.

Collectively they represent approximately 90% of the total production of stainless steels.

### More information

For more information about ISSF, please consult our website [worldstainless.org](http://worldstainless.org).

### Contact us

[issf@issf.org](mailto:issf@issf.org)

+32 2 702 89 00

## Contact us

[issf@issf.org](mailto:issf@issf.org)

+32 2 702 89 00

### Disclaimer

The International Stainless Steel Forum believes that the information presented is technically correct. However, ISSF, its members, staff and consultants specifically disclaim any and all liability or responsibility of any kind for loss, damage, or injury resulting from the use of the information contained in this brochure.

**[worldstainless.org](http://worldstainless.org)**